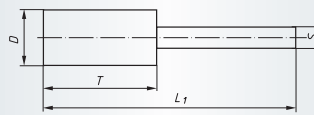
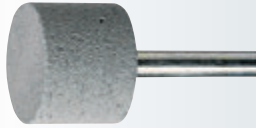


Polishing points, Shape ZY, Cylindrical
Ordering example: A29300160203028

Packing unit:

10 pcs. per type

Further dimensions and grit sizes on request

 $v_{max}: 20 \text{ m/s}$

Description	Quality/ Grit	D mm	T mm	S mm	L ₁ mm	Product-Number	recommended for	
P6ZY 1320.03	SC 80 HP	13	20	3	50	A29300130203048	1 2 3 4 5 6 7 8 9	■
P6ZY 1620.03	SC 46 HP	16	20	3	50	A29300160203028	1 2 3 4 5 6 7 8 9	■
P6ZY 1620.03	SC 80 HP	16	20	3	50	A29300160203048	1 2 3 4 5 6 7 8 9	■
P6ZY 1620.03	SC 150 HP	16	20	3	50	A29300160203068	1 2 3 4 5 6 7 8 9	■
P6ZY 1620.03	SC 240 HP	16	20	3	50	A29300160203078	1 2 3 4 5 6 7 8 9	■
P6ZY 2020.06	SC 46 HP	20	20	6	60	A29300200206028	1 2 3 4 5 6 7 8 9	■
P6ZY 2020.06	SC 150 HP	20	20	6	60	A29300200206068	1 2 3 4 5 6 7 8 9	■
P6ZY 2520.06	SC 80 HP	25	20	6	60	A29300250206048	1 2 3 4 5 6 7 8 9	■
P6ZY 3030.06	SC 46 HP	30	30	6	70	A29300300306028	1 2 3 4 5 6 7 8 9	■
P6ZY 3030.06	SC 150 HP	30	30	6	70	A29300300306068	1 2 3 4 5 6 7 8 9	■
P6ZY 3030.06	SC 240 HP	30	30	6	70	A29300300306078	1 2 3 4 5 6 7 8 9	■
P6ZY 4040.06	SC 46 HP	40	40	6	80	A29300400406028	1 2 3 4 5 6 7 8 9	■
P6ZY 4040.06	SC 150 HP	40	40	6	80	A29300400406068	1 2 3 4 5 6 7 8 9	■
P6ZY 5040.06	SC 46 HP	50	40	6	80	A29300500406028	1 2 3 4 5 6 7 8 9	■
P6ZY 5040.06	SC 150 HP	50	40	6	80	A29300500406068	1 2 3 4 5 6 7 8 9	■
P6ZY 6040.06	SC 46 HP	60	40	6	80	A29300600406028	1 2 3 4 5 6 7 8 9	■
P6ZY 6040.06	SC 150 HP	60	40	6	80	A29300600406068	1 2 3 4 5 6 7 8 9	■

The polishing points are most suitable to work metal parts which are difficult or not accessible with grinding wheels.

Applications:

Bores, Hollow weldings, Moulding tools

Material classification

1 STEELS AND CAST STEELS

Rm up to 800 N/mm²

- common structural steels
- free cutting steels
- case hardened steels
- fine grained structural steels
- extruded steels
- toughened structural steels
- boiler plate
- nitrided steels
- cast steels
- heat treated steels
- heat resistant structural steels

2 ALLOYED, TEMPERED STEELS

Rm 800 up to 1200 N/mm²

- case hardened steels
- spring steels
- fine grained structural steels
- nitrided steels
- heat treated steels
- wear resistant steels
- bearing steels

3 TOOL STEELS Rm up to 1300 N/mm²

- 60 - 65 HRC
- high-speed steels
- non-alloyed tool steels
- cold working tool steels
- hot working tool steels

4 RUST, ACID AND HEAT RESISTANT STEELS AND CAST STEELS

- austenitic
- ferritic
- ferritic-austenitic
- heat-resistant
- martensitic
- stainless, sulphurized

5 CAST IRON

6 ALUMINIUM, MAGNESIUM AND COPPER ALLOYS

- over 300 HB
- 200-300 HB
- up to 200 HB
- over 15% Si
- 10-15% Si
- 0,5-10% Si
- below 0,5% Si

7 TITANIUM AND NICKEL ALLOYS

- Rm 900 up to 1500 N/mm²
- Rm up to 900 N/mm²

8 PLASTICS, WOOD, RUBBER

9 GLASS / CARBIDES

10 STONE / TILES / GAS CEMENT

11 CONCRETE / REINFORCED CONCRETE

12 CERAMIC / FLOOR TILES

13 MARBLE

14 GRANITE

15 FRESHLY POURED CONCRETE

16 ASPHALT

● best suitable

○ suitable

■ delivery ex-stock

▲ delivery on request

Ⓢ regrind service, please enquire

Safety Symbols

(Depending on the product these symbols may vary)



Wear eye protection



Wear hearing protection



Wear a respirator



Read the instructions



Wear gloves



Only permitted with a back-up pad



Not permitted for wet grinding



Not permitted for face grinding



Do not use if damaged



Do not use for freehand cutting