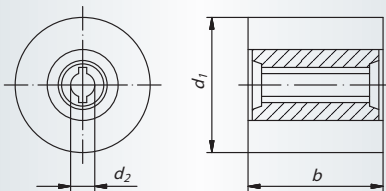


**Polishing roll, P6PW**
*Ordering example: A29401000500041*

**Packing unit:**

1 pc. per type

Further dimensions and grit sizes on request

Machine to suit: ESM 1310

 $v_{max}: 16 \text{ m/s}$ 

Description	Quality/ Grit	d <sub>1</sub> mm	b mm	d <sub>2</sub> mm	Product-Number	recommended for								
P6PW 100050	SC 80 MWP	100	50	19	A29401000500041	1	2	3	4	5	6	7	9	■
P6PW 100100	SC 46 WP	100	100	19	A29401001000020	1	2	3	4	5	6	7	9	■
P6PW 100100	SC 80 WP	100	100	19	A29401001000040	1	2	3	4	5	6	7	9	■
P6PW 100100	SC 24 MWP	100	100	19	A29401001000011	1	2	3	4	5	6	7	9	■
P6PW 100100	SC 46 MWP	100	100	19	A29401001000021	1	2	3	4	5	6	7	9	■
P6PW 100100	SC 80 MWP	100	100	19	A29401001000041	1	2	3	4	5	6	7	9	■

## Material classification

### 1 STEELS AND CAST STEELS

Rm up to 800 N/mm<sup>2</sup>

- common structural steels
- free cutting steels
- case hardened steels
- fine grained structural steels
- extruded steels
- toughened structural steels
- boiler plate
- nitrided steels
- cast steels
- heat treated steels
- heat resistant structural steels

### 2 ALLOYED, TEMPERED STEELS

Rm 800 up to 1200 N/mm<sup>2</sup>

- case hardened steels
- spring steels
- fine grained structural steels
- nitrided steels
- heat treated steels
- wear resistant steels
- bearing steels

### 3 TOOL STEELS Rm up to 1300 N/mm<sup>2</sup>

- 60 - 65 HRC
- high-speed steels
- non-alloyed tool steels
- cold working tool steels
- hot working tool steels

### 4 RUST, ACID AND HEAT RESISTANT STEELS AND CAST STEELS

- austenitic
- ferritic
- ferritic-austenitic
- heat-resistant
- martensitic
- stainless, sulphurized

### 5 CAST IRON

### 6 ALUMINIUM, MAGNESIUM AND COPPER ALLOYS

- over 300 HB
- 200-300 HB
- up to 200 HB
- over 15% Si
- 10-15% Si
- 0,5-10% Si
- below 0,5% Si

### 7 TITANIUM AND NICKEL ALLOYS

- Rm 900 up to 1500 N/mm<sup>2</sup>
- Rm up to 900 N/mm<sup>2</sup>

### 8 PLASTICS, WOOD, RUBBER

### 9 GLASS / CARBIDES

### 10 STONE / TILES / GAS CEMENT

### 11 CONCRETE / REINFORCED CONCRETE

### 12 CERAMIC / FLOOR TILES

### 13 MARBLE

### 14 GRANITE

### 15 FRESHLY POURED CONCRETE

### 16 ASPHALT

● best suitable

○ suitable

■ delivery ex-stock

▲ delivery on request

Ⓢ regrind service, please enquire

## Safety Symbols

(Depending on the product these symbols may vary)



Wear eye protection



Wear hearing protection



Wear a respirator



Read the instructions



Wear gloves



Only permitted with a back-up pad



Not permitted for wet grinding



Not permitted for face grinding



Do not use if damaged



Do not use for freehand cutting