

# Quality and application P1

These polishing points are available in one grit combination only. The surface finish is similar to a finish with grit size 100. The hard-rubber bond makes these points particularly suitable for finishing castings, hard and soft tool steels and also alloyed steel. There is

no loading with these points. If applied with low pressure, they have a long and economical tool life.



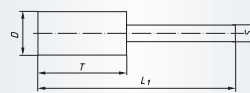
Industry

## Shape ZY, Cylindrical (according to DIN 69170)

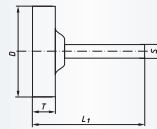
Ordering example: A260004083



Type 1



Type 2



### Packing unit:

Shank 3 mm = 20 pcs. per type,  
Shank 6 mm = 10 pcs. per type

Further dimensions on request

$v_{max}$ : 50 m/s

Description	Type	D mm	T mm	S mm	L <sub>1</sub> mm	Product-Number	recommended for									
P1ZY 0408.03	1	4	8	3	38	A260004083	1	2	3	4	5	7				■
P1ZY 0510.03	1	5	10	3	40	A260005103	1	2	3	4	5	7				■
P1ZY 0610.03	1	6	10	3	40	A260006103	1	2	3	4	5	7				■
P1ZY 0710.03	1	7	10	3	40	A260007103	1	2	3	4	5	7				■
P1ZY 0810.03	1	8	10	3	40	A260008103	1	2	3	4	5	7				■
P1ZY 0816.06	1	8	16	6	56	A260008166	1	2	3	4	5	7				■
P1ZY 0820.06	1	8	20	6	60	A260008206	1	2	3	4	5	7				■
P1ZY 1010.03	1	10	10	3	40	A2600010103	1	2	3	4	5	7				■
P1ZY 1013.03	1	10	13	3	43	A2600010133	1	2	3	4	5	7				■
P1ZY 1016.03	1	10	16	3	46	A2600010163	1	2	3	4	5	7				■
P1ZY 1020.06	1	10	20	6	60	A2600010206	1	2	3	4	5	7				■
P1ZY 1303.03	2	13	3	3	33	A2607013033	1	2	3	4	5	7				■
P1ZY 1313.03	1	13	13	3	43	A2600013133	1	2	3	4	5	7				■
P1ZY 1316.03	1	13	16	3	46	A2600013163	1	2	3	4	5	7				■
P1ZY 1320.06	1	13	20	6	60	A2600013206	1	2	3	4	5	7				■
P1ZY 1604.03	2	16	4	3	34	A2607016043	1	2	3	4	5	7				■
P1ZY 1616.03	1	16	16	3	46	A2600016163	1	2	3	4	5	7				■
P1ZY 1620.06	1	16	20	6	60	A2600016206	1	2	3	4	5	7				■
P1ZY 1632.06	1	16	32	6	72	A2600016326	1	2	3	4	5	7				■
P1ZY 2006.03	2	20	6	3	36	A2607020063	1	2	3	4	5	7				■
P1ZY 2020.06	1	20	20	6	60	A2600020206	1	2	3	4	5	7				■
P1ZY 2032.06	1	20	32	6	72	A2600020326	1	2	3	4	5	7				■
P1ZY 3210.06	2	32	10	6	50	A2607032106	1	2	3	4	5	7				■
P1ZY 3216.06	1	32	16	6	56	A2600032166	1	2	3	4	5	7				■
P1ZY 4020.06	1	40	20	6	60	A2600040206	1	2	3	4	5	7				■

## Material classification

### 1 STEELS AND CAST STEELS

Rm up to 800 N/mm<sup>2</sup>

- common structural steels
- free cutting steels
- case hardened steels
- fine grained structural steels
- extruded steels
- toughened structural steels
- boiler plate
- nitrided steels
- cast steels
- heat treated steels
- heat resistant structural steels

### 2 ALLOYED, TEMPERED STEELS

Rm 800 up to 1200 N/mm<sup>2</sup>

- case hardened steels
- spring steels
- fine grained structural steels
- nitrided steels
- heat treated steels
- wear resistant steels
- bearing steels

### 3 TOOL STEELS Rm up to 1300 N/mm<sup>2</sup>

- 60 - 65 HRC
- high-speed steels
- non-alloyed tool steels
- cold working tool steels
- hot working tool steels

### 4 RUST, ACID AND HEAT RESISTANT STEELS AND CAST STEELS

- austenitic
- ferritic
- ferritic-austenitic
- heat-resistant
- martensitic
- stainless, sulphurized

### 5 CAST IRON

### 6 ALUMINIUM, MAGNESIUM AND COPPER ALLOYS

- over 300 HB
- 200-300 HB
- up to 200 HB
- over 15% Si
- 10-15% Si
- 0,5-10% Si
- below 0,5% Si

### 7 TITANIUM AND NICKEL ALLOYS

- Rm 900 up to 1500 N/mm<sup>2</sup>
- Rm up to 900 N/mm<sup>2</sup>

### 8 PLASTICS, WOOD, RUBBER

### 9 GLASS / CARBIDES

### 10 STONE / TILES / GAS CEMENT

### 11 CONCRETE / REINFORCED CONCRETE

### 12 CERAMIC / FLOOR TILES

### 13 MARBLE

### 14 GRANITE

### 15 FRESHLY POURED CONCRETE

### 16 ASPHALT

● best suitable

○ suitable

■ delivery ex-stock

▲ delivery on request

Ⓢ regrind service, please enquire

## Safety Symbols

(Depending on the product these symbols may vary)



Wear eye protection



Wear hearing protection



Wear a respirator



Read the instructions



Wear gloves



Only permitted with a back-up pad



Not permitted for wet grinding



Not permitted for face grinding



Do not use if damaged



Do not use for freehand cutting