

### Information

---

#### **LSL, Flap Wheels of abrasive cloth (tailor-made solution)**

These wheels with various bore dimensions can be used on both hand-held and floor-stand type machines. The type LSL consists of individual flaps imbedded radially into a very substantial resin-based core. Please take note of the rotational direction!

##### **Examples of application:**

- preparation work
- deburring
- de-rusting
- prefinishing
- graining
- keying

#### **LSL, Flap Wheels of abrasive cloth for angle grinder**

##### **Advantages:**

- Fits onto standard angle grinders
- Replaces the use of shaft mounted flap wheels (where no straight grinder is available)
- No flange needed
- Ideal for welding seams on Stainless Steel (tanks)

##### **Examples of application:**

- de-rusting, removal of surface coatings and oxidized layers
- cleaning of welding seams
- grinding in the tank industry and construction of railings
- grinding in the assembling industry

##### **Application info:**

Only to be used on the periphery of the wheel

#### **LSV, Grinding wheels of abrasive fleece (tailor-made solution)**

These wheels with various bore dimensions can be used on both hand-held and floor-stand type machines. The LSV consists of abrasive impregnated fleece flaps. A special type of fleece gives flexibility to the tools which easily conforms to the individual work-piece profile.

##### **Examples of application:**

- matting
- conditioning
- polishing
- finishing
- final surface finishing

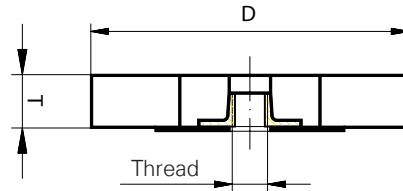
#### **LSM, Flap wheels of abrasive fleece with abrasive cloth (tailor-made solution)**

These wheels with various bore dimensions can be used on both hand-held and floor-stand type machines. Due to the combination of coated abrasive and abrasive fleece greater stock removal is achieved compared to the product type LSV. Please take note of the rotational direction!

##### **Examples of application:**

- preparation work
- de-rusting
- pre-finishing
- graining
- keying

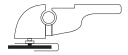
LSL, flap wheels from abrasive cloth with screw thread for angle grinders



Ordering example: A2280125200040

v<sub>max.</sub>: 80 m/s

NK = reg. Aluminium Oxide



PG 10

Product number	Description	Grit	D mm	T mm	Thread	n recom. (1/min)	n max. (1/min)	recommended for Information on page 438		
A2280125200040	LSL 125020	NK 40	125	20	M14	9.600	12.200	① ② ③ ④ ⑤ ⑥ ⑦ ⑧	■	5
A2280125200040001	LSL 125020	NK 40	125	20	5/8"	9.600	12.200	① ② ③ ④ ⑤ ⑥ ⑦ ⑧	■	5
A2280125200060	LSL 125020	NK 60	125	20	M14	9.600	12.200	① ② ③ ④ ⑤ ⑥ ⑦ ⑧	■	5
A2280125200060001	LSL 125020	NK 60	125	20	5/8"	9.600	12.200	① ② ③ ④ ⑤ ⑥ ⑦ ⑧	■	5
A2280125200080	LSL 125020	NK 80	125	20	M14	9.600	12.200	① ② ③ ④ ⑤ ⑥ ⑦ ⑧	■	5
A2280125200080001	LSL 125020	NK 80	125	20	5/8"	9.600	12.200	① ② ③ ④ ⑤ ⑥ ⑦ ⑧	■	5
A2280125200120	LSL 125020	NK 120	125	20	M14	9.600	12.200	① ② ③ ④ ⑤ ⑥ ⑦ ⑧	■	5
A2280125200120001	LSL 125020	NK 120	125	20	5/8"	9.600	12.200	① ② ③ ④ ⑤ ⑥ ⑦ ⑧	■	5

**Advantages:**

- Fits onto standard angle grinders
- Replaces the use of shaft mounted flap wheels (where no straight grinder is available)
- No flange needed
- Ideal for welding seams on Stainless Steel (tanks)

**Application examples:**

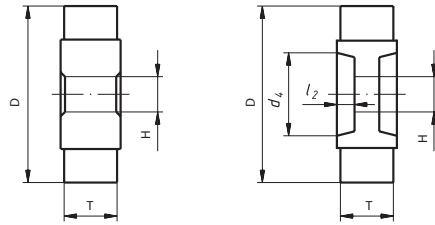
- De-rusting, removal of surface coatings and oxidise layers
- Cleaning of welding seams
- Grinding in the tank industry
- Grinding in the assembling industry

**Application info:**

- Only to be used on the periphery of the wheel

Grinding, Polishing (flexible)

LSL, Flap Wheels of abrasive cloth, tailor-made solution



Ordering example: LSL 125025 NK 60 Bore 13

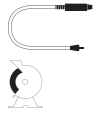
Minimum ordering quantity 25 pcs. per type

$v_{rec.}$ : 30 m/s off-hand application

$v_{max.}$ : 50 m/s for stationary machines

\* for stationary machines

NK = reg. Aluminium Oxide



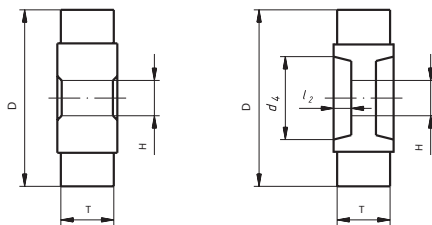
PG 10

Description	Grit	D mm	T mm	H mm	recess on both sides $d_4$ mm	recess on both sides $l_2$ mm	n recom. (1/min)	n max.* (1/min)	recommended for								▲	📦
									Information on page 438									
LSL 125025	NK 60	125	25	13-16-20	—	—	4.500	7.600	①	②	③	④	⑤	⑥	⑦	⑧	▲	
LSL 125025	NK 80	125	25	13-16-20	—	—	4.500	7.600	①	②	③	④	⑤	⑥	⑦	⑧	▲	
LSL 125025	NK 120	125	25	13-16-20	—	—	4.500	7.600	①	②	③	④	⑤	⑥	⑦	⑧	▲	
LSL 125025	NK 150	125	25	13-16-20	—	—	4.500	7.600	①	②	③	④	⑤	⑥	⑦	⑧	▲	
LSL 125025	NK 240	125	25	13-16-20	—	—	4.500	7.600	①	②	③	④	⑤	⑥	⑦	⑧	▲	
LSL 150050	NK 60	150	50	13-16-20	47	18	3.800	6.300	①	②	③	④	⑤	⑥	⑦	⑧	▲	
LSL 150050	NK 80	150	50	13-16-20	47	18	3.800	6.300	①	②	③	④	⑤	⑥	⑦	⑧	▲	
LSL 150050	NK 120	150	50	13-16-20	47	18	3.800	6.300	①	②	③	④	⑤	⑥	⑦	⑧	▲	
LSL 150050	NK 150	150	50	13-16-20	47	18	3.800	6.300	①	②	③	④	⑤	⑥	⑦	⑧	▲	
LSL 150050	NK 240	150	50	13-16-20	47	18	3.800	6.300	①	②	③	④	⑤	⑥	⑦	⑧	▲	
LSL 165050	NK 60	165	50	13-16-20	47	18	3.400	5.700	①	②	③	④	⑤	⑥	⑦	⑧	▲	
LSL 165050	NK 80	165	50	13-16-20	47	18	3.400	5.700	①	②	③	④	⑤	⑥	⑦	⑧	▲	
LSL 165050	NK 120	165	50	13-16-20	47	18	3.400	5.700	①	②	③	④	⑤	⑥	⑦	⑧	▲	
LSL 165050	NK 150	165	50	13-16-20	47	18	3.400	5.700	①	②	③	④	⑤	⑥	⑦	⑧	▲	
LSL 165050	NK 240	165	50	13-16-20	47	18	3.400	5.700	①	②	③	④	⑤	⑥	⑦	⑧	▲	
LSL 200025	NK 60	200	25	20-25-32	71	10	2.800	4.700	①	②	③	④	⑤	⑥	⑦	⑧	▲	
LSL 200025	NK 80	200	25	20-25-32	71	10	2.800	4.700	①	②	③	④	⑤	⑥	⑦	⑧	▲	
LSL 200025	NK 120	200	25	20-25-32	71	10	2.800	4.700	①	②	③	④	⑤	⑥	⑦	⑧	▲	
LSL 200025	NK 150	200	25	20-25-32	71	10	2.800	4.700	①	②	③	④	⑤	⑥	⑦	⑧	▲	
LSL 200025	NK 240	200	25	20-25-32	71	10	2.800	4.700	①	②	③	④	⑤	⑥	⑦	⑧	▲	
LSL 200050	NK 60	200	50	20-25-32	71	18	2.800	4.700	①	②	③	④	⑤	⑥	⑦	⑧	▲	
LSL 200050	NK 80	200	50	20-25-32	71	18	2.800	4.700	①	②	③	④	⑤	⑥	⑦	⑧	▲	
LSL 200050	NK 120	200	50	20-25-32	71	18	2.800	4.700	①	②	③	④	⑤	⑥	⑦	⑧	▲	
LSL 200050	NK 150	200	50	20-25-32	71	18	2.800	4.700	①	②	③	④	⑤	⑥	⑦	⑧	▲	
LSL 200050	NK 240	200	50	20-25-32	71	18	2.800	4.700	①	②	③	④	⑤	⑥	⑦	⑧	▲	

Other dimensions can be supplied on request – from 80 mm to max. 400 mm.

Grinding, Polishing (flexible)

LSV, Grinding wheels of abrasive fleece, tailor-made solution



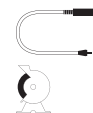
Ordering example: LSV 100050 A 104 W Bore 13

Minimum ordering quantity 25 pcs. per type

v<sub>max.</sub>: 35 m/s

A = reg. Aluminium Oxide

C = Silicon carbide

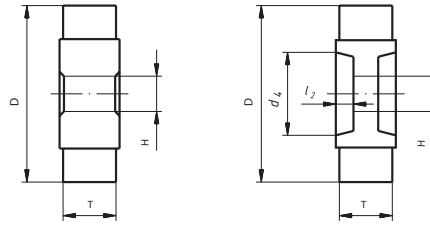


PG 10

Description	Grit	Quality	D mm	T mm	H mm	recess on both sides d <sub>4</sub> mm	recess on both sides l <sub>2</sub> mm	n recom. (1/min)	n max. (1/min)	recommended for								▲	📦
										Information on page 438									
LSV 100050	A 104 W	soft	100	50	13-16-20	—	—	3.000	6.000	1	2	3	4	5	6	7	8	▲	
LSV 100050	A 106 W	soft	100	50	13-16-20	—	—	3.000	6.000	1	2	3	4	5	6	7	8	▲	
LSV 100050	A 107 W	soft	100	50	13-16-20	—	—	3.000	6.000	1	2	3	4	5	6	7	8	▲	
LSV 100050	C 204 W	soft	100	50	13-16-20	—	—	3.000	6.000	1	2	3	4	5	6	7	8	▲	
LSV 100050	C 206 W	soft	100	50	13-16-20	—	—	3.000	6.000	1	2	3	4	5	6	7	8	▲	
LSV 100050	C 207 W	soft	100	50	13-16-20	—	—	3.000	6.000	1	2	3	4	5	6	7	8	▲	
LSV 100050	A 104 M	medium	100	50	13-16-20	—	—	3.000	6.000	1	2	3	4	5	6	7	8	▲	
LSV 100050	A 106 M	medium	100	50	13-16-20	—	—	3.000	6.000	1	2	3	4	5	6	7	8	▲	
LSV 100050	A 107 M	medium	100	50	13-16-20	—	—	3.000	6.000	1	2	3	4	5	6	7	8	▲	
LSV 100050	C 204 M	medium	100	50	13-16-20	—	—	3.000	6.000	1	2	3	4	5	6	7	8	▲	
LSV 100050	C 206 M	medium	100	50	13-16-20	—	—	3.000	6.000	1	2	3	4	5	6	7	8	▲	
LSV 100050	C 207 M	medium	100	50	13-16-20	—	—	3.000	6.000	1	2	3	4	5	6	7	8	▲	
LSV 100050	A 104 H	hard	100	50	13-16-20	—	—	3.000	6.000	1	2	3	4	5	6	7	8	▲	
LSV 100050	A 106 H	hard	100	50	13-16-20	—	—	3.000	6.000	1	2	3	4	5	6	7	8	▲	
LSV 100050	A 107 H	hard	100	50	13-16-20	—	—	3.000	6.000	1	2	3	4	5	6	7	8	▲	
LSV 100050	C 204 H	hard	100	50	13-16-20	—	—	3.000	6.000	1	2	3	4	5	6	7	8	▲	
LSV 100050	C 206 H	hard	100	50	13-16-20	—	—	3.000	6.000	1	2	3	4	5	6	7	8	▲	
LSV 100050	C 207 H	hard	100	50	13-16-20	—	—	3.000	6.000	1	2	3	4	5	6	7	8	▲	
LSV 150050	A 104 W	soft	150	50	13-16-20	47	18	2.000	4.000	1	2	3	4	5	6	7	8	▲	
LSV 150050	A 106 W	soft	150	50	13-16-20	47	18	2.000	4.000	1	2	3	4	5	6	7	8	▲	
LSV 150050	A 107 W	soft	150	50	13-16-20	47	18	2.000	4.000	1	2	3	4	5	6	7	8	▲	
LSV 150050	C 204 W	soft	150	50	13-16-20	47	18	2.000	4.000	1	2	3	4	5	6	7	8	▲	
LSV 150050	C 206 W	soft	150	50	13-16-20	47	18	2.000	4.000	1	2	3	4	5	6	7	8	▲	
LSV 150050	C 207 W	soft	150	50	13-16-20	47	18	2.000	4.000	1	2	3	4	5	6	7	8	▲	
LSV 150050	A 104 M	medium	150	50	13-16-20	47	18	2.000	4.000	1	2	3	4	5	6	7	8	▲	
LSV 150050	A 106 M	medium	150	50	13-16-20	47	18	2.000	4.000	1	2	3	4	5	6	7	8	▲	
LSV 150050	A 107 M	medium	150	50	13-16-20	47	18	2.000	4.000	1	2	3	4	5	6	7	8	▲	
LSV 150050	C 204 M	medium	150	50	13-16-20	47	18	2.000	4.000	1	2	3	4	5	6	7	8	▲	
LSV 150050	C 206 M	medium	150	50	13-16-20	47	18	2.000	4.000	1	2	3	4	5	6	7	8	▲	
LSV 150050	C 207 M	medium	150	50	13-16-20	47	18	2.000	4.000	1	2	3	4	5	6	7	8	▲	
LSV 150050	A 104 H	hard	150	50	13-16-20	47	18	2.000	4.000	1	2	3	4	5	6	7	8	▲	
LSV 150050	A 106 H	hard	150	50	13-16-20	47	18	2.000	4.000	1	2	3	4	5	6	7	8	▲	
LSV 150050	A 107 H	hard	150	50	13-16-20	47	18	2.000	4.000	1	2	3	4	5	6	7	8	▲	
LSV 150050	C 204 H	hard	150	50	13-16-20	47	18	2.000	4.000	1	2	3	4	5	6	7	8	▲	
LSV 150050	C 206 H	hard	150	50	13-16-20	47	18	2.000	4.000	1	2	3	4	5	6	7	8	▲	

Other dimensions, bores or qualities, e.g. "very hard" or "Poly Urethane-foamed" are available on request. Possible diameters 80 mm to max. 400 mm.

LSV, Grinding wheels of abrasive fleece, tailor-made solution



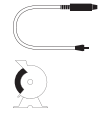
Ordering example: LSV 150050 C 207 H Bore 13

Minimum ordering quantity 25 pcs. per type

v<sub>max.</sub>: 35 m/s

A = reg. Aluminium Oxide

C = Silicon carbide

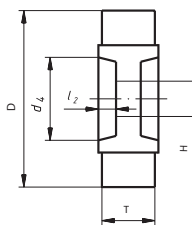
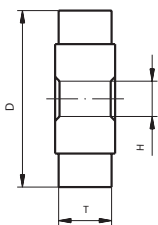


PG 10

Description	Grit	Quality	D mm	T mm	H mm	recess on both sides d <sub>4</sub> mm	recess on both sides l <sub>2</sub> mm	n recom. (1/min)	n max. (1/min)	recommended for								▲	☐
										Information on page 438									
LSV 150050	C 207 H	hard	150	50	13-16-20	47	18	2.000	4.000	1	2	3	4	5	6	7	8	▲	☐
LSV 160050	A 104 W	soft	160	50	13-16-20	47	18	1.900	3.800	1	2	3	4	5	6	7	8	▲	☐
LSV 160050	A 106 W	soft	160	50	13-16-20	47	18	1.900	3.800	1	2	3	4	5	6	7	8	▲	☐
LSV 160050	A 107 W	soft	160	50	13-16-20	47	18	1.900	3.800	1	2	3	4	5	6	7	8	▲	☐
LSV 160050	C 204 W	soft	160	50	13-16-20	47	18	1.900	3.800	1	2	3	4	5	6	7	8	▲	☐
LSV 160050	C 206 W	soft	160	50	13-16-20	47	18	1.900	3.800	1	2	3	4	5	6	7	8	▲	☐
LSV 160050	C 207 W	soft	160	50	13-16-20	47	18	1.900	3.800	1	2	3	4	5	6	7	8	▲	☐
LSV 160050	A 104 M	medium	160	50	13-16-20	47	18	1.900	3.800	1	2	3	4	5	6	7	8	▲	☐
LSV 160050	A 106 M	medium	160	50	13-16-20	47	18	1.900	3.800	1	2	3	4	5	6	7	8	▲	☐
LSV 160050	A 107 M	medium	160	50	13-16-20	47	18	1.900	3.800	1	2	3	4	5	6	7	8	▲	☐
LSV 160050	C 204 M	medium	160	50	13-16-20	47	18	1.900	3.800	1	2	3	4	5	6	7	8	▲	☐
LSV 160050	C 206 M	medium	160	50	13-16-20	47	18	1.900	3.800	1	2	3	4	5	6	7	8	▲	☐
LSV 160050	C 207 M	medium	160	50	13-16-20	47	18	1.900	3.800	1	2	3	4	5	6	7	8	▲	☐
LSV 160050	A 104 H	hard	160	50	13-16-20	47	18	1.900	3.800	1	2	3	4	5	6	7	8	▲	☐
LSV 160050	A 106 H	hard	160	50	13-16-20	47	18	1.900	3.800	1	2	3	4	5	6	7	8	▲	☐
LSV 160050	A 107 H	hard	160	50	13-16-20	47	18	1.900	3.800	1	2	3	4	5	6	7	8	▲	☐
LSV 160050	C 204 H	hard	160	50	13-16-20	47	18	1.900	3.800	1	2	3	4	5	6	7	8	▲	☐
LSV 160050	C 206 H	hard	160	50	13-16-20	47	18	1.900	3.800	1	2	3	4	5	6	7	8	▲	☐
LSV 160050	C 207 H	hard	160	50	13-16-20	47	18	1.900	3.800	1	2	3	4	5	6	7	8	▲	☐
LSV 200025	A 104 W	soft	200	25	20-25-32	71	10	1.500	3.000	1	2	3	4	5	6	7	8	▲	☐
LSV 200025	A 106 W	soft	200	25	20-25-32	71	10	1.500	3.000	1	2	3	4	5	6	7	8	▲	☐
LSV 200025	A 107 W	soft	200	25	20-25-32	71	10	1.500	3.000	1	2	3	4	5	6	7	8	▲	☐
LSV 200025	C 204 W	soft	200	25	20-25-32	71	10	1.500	3.000	1	2	3	4	5	6	7	8	▲	☐
LSV 200025	C 206 W	soft	200	25	20-25-32	71	10	1.500	3.000	1	2	3	4	5	6	7	8	▲	☐
LSV 200025	C 207 W	soft	200	25	20-25-32	71	10	1.500	3.000	1	2	3	4	5	6	7	8	▲	☐
LSV 200025	A 104 M	medium	200	25	20-25-32	71	10	1.500	3.000	1	2	3	4	5	6	7	8	▲	☐
LSV 200025	A 106 M	medium	200	25	20-25-32	71	10	1.500	3.000	1	2	3	4	5	6	7	8	▲	☐
LSV 200025	A 107 M	medium	200	25	20-25-32	71	10	1.500	3.000	1	2	3	4	5	6	7	8	▲	☐
LSV 200025	C 204 M	medium	200	25	20-25-32	71	10	1.500	3.000	1	2	3	4	5	6	7	8	▲	☐
LSV 200025	C 206 M	medium	200	25	20-25-32	71	10	1.500	3.000	1	2	3	4	5	6	7	8	▲	☐
LSV 200025	C 207 M	medium	200	25	20-25-32	71	10	1.500	3.000	1	2	3	4	5	6	7	8	▲	☐
LSV 200025	A 104 H	hard	200	25	20-25-32	71	10	1.500	3.000	1	2	3	4	5	6	7	8	▲	☐
LSV 200025	A 106 H	hard	200	25	20-25-32	71	10	1.500	3.000	1	2	3	4	5	6	7	8	▲	☐
LSV 200025	A 107 H	hard	200	25	20-25-32	71	10	1.500	3.000	1	2	3	4	5	6	7	8	▲	☐
LSV 200025	C 204 H	hard	200	25	20-25-32	71	10	1.500	3.000	1	2	3	4	5	6	7	8	▲	☐

Other dimensions, bores or qualities, e.g. "very hard" or "Poly Urethane-foamed" are available on request. Possible diameters 80 mm to max. 400 mm.

LSV, Grinding wheels of abrasive fleece, tailor-made solution



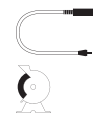
Ordering example: LSV 200025 C 206 H Bore 20

Minimum ordering quantity 25 pcs. per type

v<sub>max.</sub>: 35 m/s

A = reg. Aluminium Oxide

C = Silicon carbide



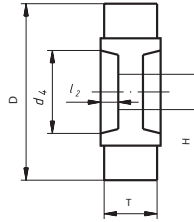
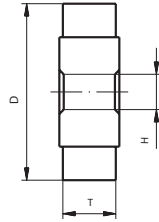
PG 10

Description	Grit	Quality	D mm	T mm	H mm	recess on both sides d <sub>4</sub> mm	recess on both sides l <sub>2</sub> mm	n recom. (1/min)	n max. (1/min)	recommended for								▲	☐
										Information on page 438									
LSV 200025	C 206 H	hard	200	25	20-25-32	71	10	1.500	3.000	1	2	3	4	5	6	7	8	▲	☐
LSV 200025	C 207 H	hard	200	25	20-25-32	71	10	1.500	3.000	1	2	3	4	5	6	7	8	▲	☐
LSV 200050	A 104 W	soft	200	50	20-25-32	71	18	1.500	3.000	1	2	3	4	5	6	7	8	▲	☐
LSV 200050	A 106 W	soft	200	50	20-25-32	71	18	1.500	3.000	1	2	3	4	5	6	7	8	▲	☐
LSV 200050	A 107 W	soft	200	50	20-25-32	71	18	1.500	3.000	1	2	3	4	5	6	7	8	▲	☐
LSV 200050	C 204 W	soft	200	50	20-25-32	71	18	1.500	3.000	1	2	3	4	5	6	7	8	▲	☐
LSV 200050	C 206 W	soft	200	50	20-25-32	71	18	1.500	3.000	1	2	3	4	5	6	7	8	▲	☐
LSV 200050	C 207 W	soft	200	50	20-25-32	71	18	1.500	3.000	1	2	3	4	5	6	7	8	▲	☐
LSV 200050	A 104 M	medium	200	50	20-25-32	71	18	1.500	3.000	1	2	3	4	5	6	7	8	▲	☐
LSV 200050	A 106 M	medium	200	50	20-25-32	71	18	1.500	3.000	1	2	3	4	5	6	7	8	▲	☐
LSV 200050	A 107 M	medium	200	50	20-25-32	71	18	1.500	3.000	1	2	3	4	5	6	7	8	▲	☐
LSV 200050	C 204 M	medium	200	50	20-25-32	71	18	1.500	3.000	1	2	3	4	5	6	7	8	▲	☐
LSV 200050	C 206 M	medium	200	50	20-25-32	71	18	1.500	3.000	1	2	3	4	5	6	7	8	▲	☐
LSV 200050	C 207 M	medium	200	50	20-25-32	71	18	1.500	3.000	1	2	3	4	5	6	7	8	▲	☐
LSV 200050	A 104 H	hard	200	50	20-25-32	71	18	1.500	3.000	1	2	3	4	5	6	7	8	▲	☐
LSV 200050	A 106 H	hard	200	50	20-25-32	71	18	1.500	3.000	1	2	3	4	5	6	7	8	▲	☐
LSV 200050	A 107 H	hard	200	50	20-25-32	71	18	1.500	3.000	1	2	3	4	5	6	7	8	▲	☐
LSV 200050	C 204 H	hard	200	50	20-25-32	71	18	1.500	3.000	1	2	3	4	5	6	7	8	▲	☐
LSV 200050	C 206 H	hard	200	50	20-25-32	71	18	1.500	3.000	1	2	3	4	5	6	7	8	▲	☐
LSV 200050	C 207 H	hard	200	50	20-25-32	71	18	1.500	3.000	1	2	3	4	5	6	7	8	▲	☐

Other dimensions, bores or qualities, e.g. "very hard" or "Poly Urethane-foamed" are available on request. Possible diameters 80 mm to max. 400 mm.

Grinding, Polishing (flexible)

**LSM, Flap wheels of abrasive fleece with abrasive cloth, tailor-made solution**



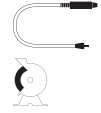
Ordering example: LSM 080050 A 104/80 H Bore 10

Minimum ordering quantity 25 pcs. per type

v<sub>max.</sub>: 35 m/s

A = reg. Aluminium Oxide

C = Silicon carbide

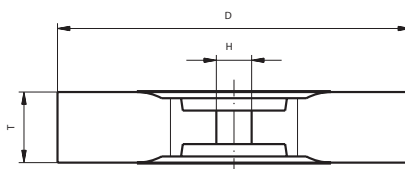


PG 10

Description	Grit	D mm	T mm	H mm	recess on both sides d <sub>4</sub> mm	recess on both sides l <sub>2</sub> mm	n recom. (1/min)	n max.* (1/min)	recommended for								▲	☐
									Information on page 438									
LSM 080050	A104/80	80	50	10-13-16	—	—	3.800	7.600	1	2	3	4	5	6	7	8	▲	☐
LSM 080050	A106/150	80	50	10-13-16	—	—	3.800	7.600	1	2	3	4	5	6	7	8	▲	☐
LSM 080050	A107/240	80	50	10-13-16	—	—	3.800	7.600	1	2	3	4	5	6	7	8	▲	☐
LSM 080050	C 204/80	80	50	10-13-16	—	—	3.800	7.600	1	2	3	4	5	6	7	8	▲	☐
LSM 080050	C 206/150	80	50	10-13-16	—	—	3.800	7.600	1	2	3	4	5	6	7	8	▲	☐
LSM 080050	C 207/240	80	50	10-13-16	—	—	3.800	7.600	1	2	3	4	5	6	7	8	▲	☐
LSM 150050	A104/80	150	50	13-16-20	47	18	2.000	4.000	1	2	3	4	5	6	7	8	▲	☐
LSM 150050	A106/150	150	50	13-16-20	47	18	2.000	4.000	1	2	3	4	5	6	7	8	▲	☐
LSM 150050	A107/240	150	50	13-16-20	47	18	2.000	4.000	1	2	3	4	5	6	7	8	▲	☐
LSM 150050	C 204/80	150	50	13-16-20	47	18	2.000	4.000	1	2	3	4	5	6	7	8	▲	☐
LSM 150050	C 206/150	150	50	13-16-20	47	18	2.000	4.000	1	2	3	4	5	6	7	8	▲	☐
LSM 150050	C 207/240	150	50	13-16-20	47	18	2.000	4.000	1	2	3	4	5	6	7	8	▲	☐
LSM 160050	A104/80	160	50	13-16-20	47	18	1.900	3.800	1	2	3	4	5	6	7	8	▲	☐
LSM 160050	A106/150	160	50	13-16-20	47	18	1.900	3.800	1	2	3	4	5	6	7	8	▲	☐
LSM 160050	A107/240	160	50	13-16-20	47	18	1.900	3.800	1	2	3	4	5	6	7	8	▲	☐
LSM 160050	C 204/80	160	50	13-16-20	47	18	1.900	3.800	1	2	3	4	5	6	7	8	▲	☐
LSM 160050	C 206/150	160	50	13-16-20	47	18	1.900	3.800	1	2	3	4	5	6	7	8	▲	☐
LSM 160050	C 207/240	160	50	13-16-20	47	18	1.900	3.800	1	2	3	4	5	6	7	8	▲	☐
LSM 200050	A104/80	200	50	20-25-32	71	18	1.500	3.000	1	2	3	4	5	6	7	8	▲	☐
LSM 200050	A106/150	200	50	20-25-32	71	18	1.500	3.000	1	2	3	4	5	6	7	8	▲	☐
LSM 200050	A107/240	200	50	20-25-32	71	18	1.500	3.000	1	2	3	4	5	6	7	8	▲	☐
LSM 200050	C 204/80	200	50	20-25-32	71	18	1.500	3.000	1	2	3	4	5	6	7	8	▲	☐
LSM 200050	C 206/150	200	50	20-25-32	71	18	1.500	3.000	1	2	3	4	5	6	7	8	▲	☐
LSM 200050	C 207/240	200	50	20-25-32	71	18	1.500	3.000	1	2	3	4	5	6	7	8	▲	☐

Other dimensions can be supplied on request – from 80 mm to max. 400 mm.

Grinding, Polishing (flexible)

**FRV, Mops of abrasive fleece**


Ordering example: FRV 200050 A 104 Bore 20

Minimum ordering quantity 25 pcs. per type

A = reg. Aluminium Oxide


**PG 10**

Description	Grit	Quality	D mm	T mm	H mm	n recom. (1/min)	n max.* (1/min)	recommended for Information on page 438		
FRV 200050	A 104	medium	200	50	20-25-32	1.400	1.900	① ② ③ ④ ⑤ ⑥ ⑦ ⑧	▲	
FRV 200050	A 106	fine	200	50	20-25-32	1.400	1.900	① ② ③ ④ ⑤ ⑥ ⑦ ⑧	▲	
FRV 200050	A 107	very fine	200	50	20-25-32	1.400	1.900	① ② ③ ④ ⑤ ⑥ ⑦ ⑧	▲	
FRV 250050	A 104	medium	250	50	20-25-32	1.100	1.500	① ② ③ ④ ⑤ ⑥ ⑦ ⑧	▲	
FRV 250050	A 106	fine	250	50	20-25-32	1.100	1.500	① ② ③ ④ ⑤ ⑥ ⑦ ⑧	▲	
FRV 250050	A 107	very fine	250	50	20-25-32	1.100	1.500	① ② ③ ④ ⑤ ⑥ ⑦ ⑧	▲	
FRV 300060	A 104	medium	300	60	20-25-32	900	1.200	① ② ③ ④ ⑤ ⑥ ⑦ ⑧	▲	
FRV 300060	A 106	fine	300	60	20-25-32	900	1.200	① ② ③ ④ ⑤ ⑥ ⑦ ⑧	▲	
FRV 300060	A 107	very fine	300	60	20-25-32	900	1.200	① ② ③ ④ ⑤ ⑥ ⑦ ⑧	▲	

LUKAS Fleece Mops are manufactured from abrasive fleece and are used when a satin polish is required on stainless, chrome, nickel and non ferrous metals. They are also ideal for cleaning-up and enhancing painted and varnished surfaces in the wood and plastic industries.

Furthermore, they are suited to the manufacture of stainless and aluminium containers supplied to the food industry. The ideal operating speed lies between 10 – 20 m/s and the fleece mops should be used with little pressure. They can be used with or without coolant. Operating with coolant extends the life of the fleece mop. When using water as a coolant a matt surface is achieved; oil produces a satin finish. LUKAS Fleece Mops can be clamped together on a single spindle thus giving the overall width required.

Grinding, Polishing (flexible)



## Information

---

### General

These rolls have a nineteen mm bore with four keyways; they are used on hand-held surface conditioning machines.

### LWL, Flap rolls of abrasive cloth for conditioning machines

These tools consist of individual flaps which are radially embedded into a resin core. Please take note of the rotational direction!

#### Examples of application:

- preparation work
- deburring
- de-rusting
- pre-finishing
- graining
- keying

### LWV, Flap rolls of abrasive fleece for conditioning machines

This product type consists of abrasive fleece flaps. The special fleece gives the tool flexibility and conforms to the individual workpiece profile.

#### Examples of application:

- matting
- conditioning
- polishing
- finishing
- final finishing of the surface

### LWF, Sinus-Abrasive rolls of abrasive fleece for conditioning machines

These tools are manufactured from strips of abrasive fleece which are wound in a wave pattern around the core. This configuration achieves an unblemished grained matt surface finish. The special fleece makes the LWF flexible and conforms to the individual workpiece profile.

#### Examples of application:

- matting
- conditioning
- polishing
- finishing
- fine surface finishing

### LWM, Flap rolls of abrasive fleece with abrasive cloth insert for conditioning machines

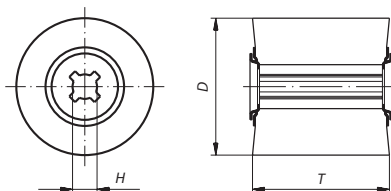
Due to the combination of coated abrasive and abrasive fleece, greater stock removal is achieved compared to the product type LWV. Please take note of the rotational direction!

#### Examples of application:

- preparation work
- de-rusting
- pre-finishing
- graining
- keying

### LWM, flap rolls using TF material

These rolls are supplied with a 19 mm bore and four key-ways, and are particularly suited for stainless steel. Please take note of the rotational direction!

**LWL, Flap rolls of abrasive cloth for conditioning machines**


Ordering example: A22801001000040

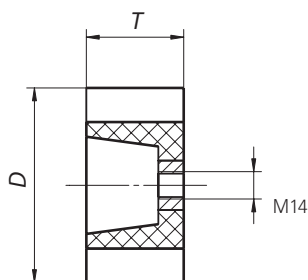
NK = reg. Aluminium Oxide

Machines to suit: page 275.


**PG 10**

Product number	Description	Grit	D mm	T mm	H mm	n recom. (1/min)	n max. (1/min)	recommended for Information on page 438		
A2280100500040	LWL 100050	NK 40	100	50	19	3.700	6.000	① ② ③ ④ ⑤ ⑥ ⑦ ⑧	■	2
A2280100500060	LWL 100050	NK 60	100	50	19	3.700	6.000	① ② ③ ④ ⑤ ⑥ ⑦ ⑧	■	2
A2280100500080	LWL 100050	NK 80	100	50	19	3.700	6.000	① ② ③ ④ ⑤ ⑥ ⑦ ⑧	■	2
A22801001000040	LWL 100100	NK 40	100	100	19	3.700	6.000	① ② ③ ④ ⑤ ⑥ ⑦ ⑧	■	1
A22801001000060	LWL 100100	NK 60	100	100	19	3.700	6.000	① ② ③ ④ ⑤ ⑥ ⑦ ⑧	■	1
A22801001000080	LWL 100100	NK 80	100	100	19	3.700	6.000	① ② ③ ④ ⑤ ⑥ ⑦ ⑧	■	1

Grinding, Polishing (flexible)

**LWL, Flap rolls of abrasive cloth with thread**


Ordering example: A2280100501060

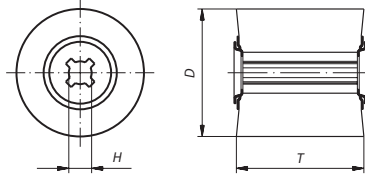
NK = reg. Aluminium Oxide

Suitable for controlled angle grinders.


**PG 10**

Product number	Description	Grit	D mm	T mm	Thread	n recom. (1/min)	n max. (1/min)	recommended for Information on page 438		
A2280100501060	LWL 100050	NK 60	100	50	M 14	3.700	6.000	① ② ③ ④ ⑤ ⑥ ⑦ ⑧	■	2
A2280100501080	LWL 100050	NK 80	100	50	M 14	3.700	6.000	① ② ③ ④ ⑤ ⑥ ⑦ ⑧	■	2

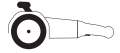
LWV, Flap rolls of abrasive fleece for conditioning machines



Ordering example: A22861001000104

A = reg. Aluminium Oxide

Machines to suit: page 275.

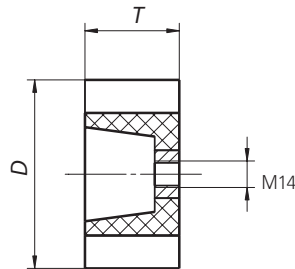


PG 10

Product number	Description	Grit	D mm	T mm	H mm	n recom. (1/min)	n max. (1/min)	recommended for Information on page 438		
A2286100500104	LWV 100050	A 104	100	50	19	2.800	6.000	① ② ③ ④ ⑤ ⑥ ⑦ ⑧	■	2
A2286100500106	LWV 100050	A 106	100	50	19	2.800	6.000	① ② ③ ④ ⑤ ⑥ ⑦ ⑧	■	2
A2286100500107	LWV 100050	A 107	100	50	19	2.800	6.000	① ② ③ ④ ⑤ ⑥ ⑦ ⑧	■	2
A22861001000104	LWV 100100	A 104	100	100	19	2.800	6.000	① ② ③ ④ ⑤ ⑥ ⑦ ⑧	■	1
A22861001000106	LWV 100100	A 106	100	100	19	2.800	6.000	① ② ③ ④ ⑤ ⑥ ⑦ ⑧	■	1
A22861001000107	LWV 100100	A 107	100	100	19	2.800	6.000	① ② ③ ④ ⑤ ⑥ ⑦ ⑧	■	1

Grinding, Polishing  
(flexible)

LWV, Flap rolls of abrasive fleece with thread



Ordering example: A2286100501104

A = reg. Aluminium Oxide

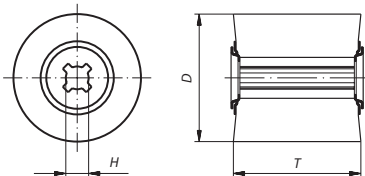
Suitable for controlled angle grinders.



PG 10

Product number	Description	Grit	D mm	T mm	Thread	n recom. (1/min)	n max. (1/min)	recommended for Information on page 438		
A2286100501104	LWV 100050	A 104	100	50	M 14	2.800	6.000	① ② ③ ④ ⑤ ⑥ ⑦ ⑧	■	2
A2286100501106	LWV 100050	A 106	100	50	M 14	2.800	6.000	① ② ③ ④ ⑤ ⑥ ⑦ ⑧	■	2
A2286100501107	LWV 100050	A 107	100	50	M 14	2.800	6.000	① ② ③ ④ ⑤ ⑥ ⑦ ⑧	■	2

LWM, Flap rolls of abrasive fleece/abrasive cloth combination



Ordering example: A22881001000120

TF = Special quality for INOX

Machines to suit: page 275.



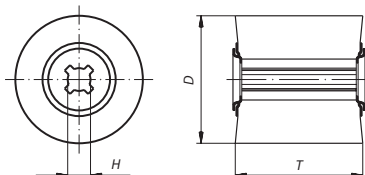
PG 10

Product number	Description	Grit	D mm	T mm	H mm	n recom. (1/min)	n max. (1/min)	recommended for		
A22881001000120	LWM 100100	TF 120/80	100	100	19	2.800	6.000	Information on page 438	1 2 3 4 5 6 7 8	1

Ideal for surface finishing of metalsheet components such as stainless steel sinks and containers

Grinding, Polishing (flexible)

LWM, Flap rolls of abrasive fleece/abrasive cloth combination



Ordering example: A22881001000104

A = reg. Aluminium Oxide

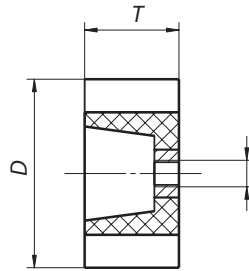
Machines to suit: page 275.



PG 10

Product number	Description	Grit	D mm	T mm	H mm	n recom. (1/min)	n max. (1/min)	recommended for		
A2288100500104	LWM 100050	A 104/80	100	50	19	2.800	6.000	Information on page 438	1 2 3 4 5 6 7 8	2
A2288100500106	LWM 100050	A 106/150	100	50	19	2.800	6.000	Information on page 438	1 2 3 4 5 6 7 8	2
A2288100500107	LWM 100050	A 107/240	100	50	19	2.800	6.000	Information on page 438	1 2 3 4 5 6 7 8	2
A22881001000104	LWM 100100	A 104/80	100	100	19	2.800	6.000	Information on page 438	1 2 3 4 5 6 7 8	1
A22881001000106	LWM 100100	A 106/150	100	100	19	2.800	6.000	Information on page 438	1 2 3 4 5 6 7 8	1
A22881001000107	LWM 100100	A 107/240	100	100	19	2.800	6.000	Information on page 438	1 2 3 4 5 6 7 8	1

LWM, Flap rolls of abrasive fleece/abrasive cloth combination with thread



Ordering example: A2288100501104

A = reg. Aluminium Oxide

Suitable for controlled angle grinders.

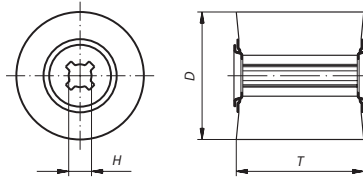


PG 10

Product number	Description	Grit	D mm	T mm	Thread	n recom. (1/min)	n max. (1/min)	recommended for		
A2288100501104	LWM 100050	A 104/80	100	50	M 14	2.800	6.000	① ② ③ ④ ⑤ ⑥ ⑦ ⑧	■	2
A2288100501106	LWM 100050	A 106/150	100	50	M 14	2.800	6.000	① ② ③ ④ ⑤ ⑥ ⑦ ⑧	■	2

Grinding, Polishing (flexible)

LWF, Sinus-Abrasive rolls of abrasive fleece for conditioning machines

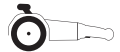


Ordering example: A22811001000104

A = reg. Aluminium Oxide

C = Silicon carbide

Machines to suit: page 275.



PG 10

Product number	Description	Grit	D mm	T mm	H mm	n recom. (1/min)	n max. (1/min)	recommended for		
A2281100500104	LWF 100050	A 104	100	50	19	2.800	3.800	① ② ③ ④ ⑤ ⑥ ⑦ ⑧	■	2
A2281100500106	LWF 100050	A 106	100	50	19	2.800	3.800	① ② ③ ④ ⑤ ⑥ ⑦ ⑧	■	2
A22811001000104	LWF 100100	A 104	100	100	19	2.800	3.800	① ② ③ ④ ⑤ ⑥ ⑦ ⑧	■	1
A22811001000106	LWF 100100	A 106	100	100	19	2.800	3.800	① ② ③ ④ ⑤ ⑥ ⑦ ⑧	■	1
A2281100500208	LWF 100050	C 208	100	50	19	2.800	3.800	① ② ③ ④ ⑤ ⑥ ⑦ ⑧ ⑨	■	2
A22811001000208	LWF 100100	C 208	100	100	19	2.800	3.800	① ② ③ ④ ⑤ ⑥ ⑦ ⑧ ⑨	■	1

Conditioning machine



Ordering example: A3995ESM1310

Weight: approx. 2,8 kg

PG 15

Product number	Description	Idle speed min -1	Power input W	Max. Ø mm tool diameter	Tool width mm	Hole size mm	recommended for Information on page 438		
A3995ESM1310	ESM 1310	1.300-3.050	1.300	120	100	19			1

**In conjunction with the appropriate tool, ideal for:**

- Satin finishing
- Conditioning
- Polishing
- Brushing
- Smoothing
- Deburring
- Matt finishing

**Special features:**

- Highly resilient motor (stable)
- Dual gear reduction (long service life)
- Dust-protected bearings (low wear)
- In conjunction with the optimal tooling, a shadow free and uniform surface can be achieved on metal, wood and plastic.

**Electronic control:**

- Soft start
- Infinitely variable speed control
- Temperature and overload cut-off

Grinding, Polishing (flexible)

## Material classification

### 1 Steels and Cast Steels

Rm up to 800 N/mm<sup>2</sup>

- common structural steels
- free cutting steels
- case hardened steels
- fine grained structural steels
- extruded steels
- toughened structural steels
- boiler plate
- nitrided steels
- cast steels
- heat treated steels
- heat resistant structural steels

### 2 Alloyed, Tempered Steels

Rm 800 up to 1200 N/mm<sup>2</sup>

- case hardened steels
- spring steels
- fine grained structural steels
- nitrided steels
- heat treated steels
- wear resistant steels
- bearing steels

### 3 Tool Steels

Rm up to 1300 N/mm<sup>2</sup>

- 60–65 HRC
- high-speed steels
- non-alloyed tool steels
- cold working tool steels
- hot working tool steels

### 4 Rust, acid and heat resistant Steels and Cast Steels

- austenitic
- ferritic
- ferritic-austenitic
- heat-resistant
- martensitic
- stainless, sulphurized

### 5 Cast Iron

### 6 Aluminium, Magnesium and Copper Alloys

- over 300 HB
- 200–300 HB
- up to 200 HB
- over 15% Si
- 10–15% Si
- 0,5–10% Si
- below 0,5% Si

### 7 Titanium and Nickel Alloys

- Rm 900 up to 1500 N/mm<sup>2</sup>
- Rm up to 900 N/mm<sup>2</sup>

### 8 Plastics, Wood, Rubber

### 9 Glass/Carbides

### 10 Stone/Tiles/Gas Cement

### 11 Concrete/Reinforced Concrete

### 12 Ceramic/Floor Tiles

### 13 Marble

### 14 Granite

### 15 Freshly Poured Concrete

### 16 Asphalt

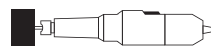
● best suitable

○ suitable

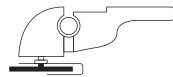
■ delivery ex-stock

▲ delivery on request

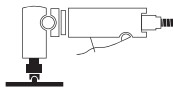
## Power tools



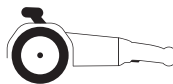
Straight grinder



Free-hand angle grinder



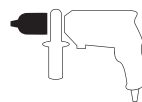
Pneumatic angle grinder



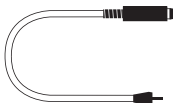
Conditioning machine



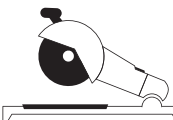
Backstand



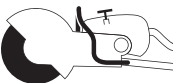
Boring machine



Flexible shaft grinder



Fixed-base cutting machine



Petrol-driven cutting machine

## Product Lines

★★★ High Performance

★★☆ Industry

★☆☆ Base

## Safety Symbols

(Depending on the product these symbols may vary)



Wear eye protection



Wear hearing protection



Wear a respirator



Read the instructions



Wear gloves



Only permitted with a back-up pad



Not permitted for wet grinding



Not permitted for face grinding



Do not use if damaged



Not permitted for hand-held or manually-guided grinding