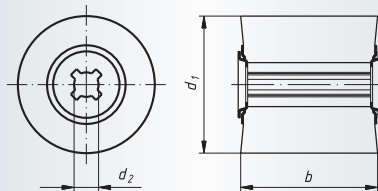


**LWF, Sinus-Abrasive rolls of abrasive fleece for conditioning machines**
*Ordering example: A2281100500104*

**Packing unit:**

LWF 100050 = 2 pcs. per type

LWF 100100 = 1 pc. per type

A = reg. Aluminium Oxide

C = Silicon carbide

Machines to suit: page 292

| Description | Grits | d <sub>1</sub><br>mm | b<br>mm | d <sub>2</sub><br>mm | n recom.<br>(1/min) | n max.<br>(1/min) | Product-Number  | recommended for   |   |
|-------------|-------|----------------------|---------|----------------------|---------------------|-------------------|-----------------|-------------------|---|
| LWF 100050  | A 104 | 100                  | 50      | 19                   | 2.800               | 3.800             | A2281100500104  | ① ② ③ ④ ⑤ ⑥ ⑦ ⑧   | ■ |
| LWF 100050  | A 106 | 100                  | 50      | 19                   | 2.800               | 3.800             | A2281100500106  | ① ② ③ ④ ⑤ ⑥ ⑦ ⑧   | ■ |
| LWF 100050  | C 208 | 100                  | 50      | 19                   | 2.800               | 3.800             | A2281100500208  | ① ② ③ ④ ⑤ ⑥ ⑦ ⑧ ⑨ | ■ |
| LWF 100100  | A 104 | 100                  | 100     | 19                   | 2.800               | 3.800             | A22811001000104 | ① ② ③ ④ ⑤ ⑥ ⑦ ⑧   | ■ |
| LWF 100100  | A 106 | 100                  | 100     | 19                   | 2.800               | 3.800             | A22811001000106 | ① ② ③ ④ ⑤ ⑥ ⑦ ⑧   | ■ |
| LWF 100100  | C 208 | 100                  | 100     | 19                   | 2.800               | 3.800             | A22811001000208 | ① ② ③ ④ ⑤ ⑥ ⑦ ⑧ ⑨ | ■ |

## Material classification

### 1 STEELS AND CAST STEELS

Rm up to 800 N/mm<sup>2</sup>

- common structural steels
- free cutting steels
- case hardened steels
- fine grained structural steels
- extruded steels
- toughened structural steels
- boiler plate
- nitrided steels
- cast steels
- heat treated steels
- heat resistant structural steels

### 2 ALLOYED, TEMPERED STEELS

Rm 800 up to 1200 N/mm<sup>2</sup>

- case hardened steels
- spring steels
- fine grained structural steels
- nitrided steels
- heat treated steels
- wear resistant steels
- bearing steels

### 3 TOOL STEELS Rm up to 1300 N/mm<sup>2</sup>

- 60 - 65 HRC
- high-speed steels
- non-alloyed tool steels
- cold working tool steels
- hot working tool steels

### 4 RUST, ACID AND HEAT RESISTANT STEELS AND CAST STEELS

- austenitic
- ferritic
- ferritic-austenitic
- heat-resistant
- martensitic
- stainless, sulphurized

### 5 CAST IRON

### 6 ALUMINIUM, MAGNESIUM AND COPPER ALLOYS

- over 300 HB
- 200-300 HB
- up to 200 HB
- over 15% Si
- 10-15% Si
- 0,5-10% Si
- below 0,5% Si

### 7 TITANIUM AND NICKEL ALLOYS

- Rm 900 up to 1500 N/mm<sup>2</sup>
- Rm up to 900 N/mm<sup>2</sup>

### 8 PLASTICS, WOOD, RUBBER

### 9 GLASS / CARBIDES

### 10 STONE / TILES / GAS CEMENT

### 11 CONCRETE / REINFORCED CONCRETE

### 12 CERAMIC / FLOOR TILES

### 13 MARBLE

### 14 GRANITE

### 15 FRESHLY POURED CONCRETE

### 16 ASPHALT

● best suitable

○ suitable

■ delivery ex-stock

▲ delivery on request

Ⓢ regrind service, please enquire

## Safety Symbols

(Depending on the product these symbols may vary)



Wear eye protection



Wear hearing protection



Wear a respirator



Read the instructions



Wear gloves



Only permitted with a back-up pad



Not permitted for wet grinding



Not permitted for face grinding



Do not use if damaged



Do not use for freehand cutting