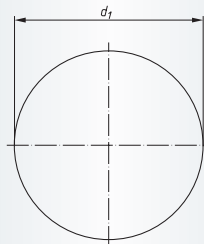
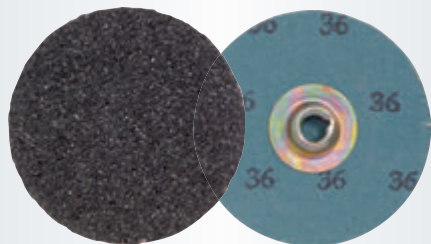


**PSG, Abrasive discs, quick-change, Silicon carbide**
*Ordering example: A3378038036*

**Packing unit:**

100 pcs. per type

from Ø 75 mm: 50 pcs. per type

| Description | Quality Grits | d <sub>1</sub> mm | n max. (1/min) | Suitable carriers   | Product-Number | recommended for   |   |
|-------------|---------------|-------------------|----------------|---------------------|----------------|-------------------|---|
| PSG 038     | SIC 36        | 38                | 30.000         | GTG 038             | A3378038036    | ① ② ③ ④ ⑤ ⑥ ⑦ ⑧ ⑨ | ■ |
| PSG 038     | SIC 60        | 38                | 30.000         | GTG 038             | A3378038060    | ① ② ③ ④ ⑤ ⑥ ⑦ ⑧ ⑨ | ■ |
| PSG 038     | SIC 80        | 38                | 30.000         | GTG 038             | A3378038080    | ① ② ③ ④ ⑤ ⑥ ⑦ ⑧ ⑨ | ■ |
| PSG 038     | SIC 120       | 38                | 30.000         | GTG 038             | A3378038120    | ① ② ③ ④ ⑤ ⑥ ⑦ ⑧ ⑨ | ■ |
| PSG 050     | SIC 36        | 51                | 30.000         | GTG 038 and GTG 050 | A3378050036    | ① ② ③ ④ ⑤ ⑥ ⑦ ⑧ ⑨ | ■ |
| PSG 050     | SIC 60        | 51                | 30.000         | GTG 038 and GTG 050 | A3378050060    | ① ② ③ ④ ⑤ ⑥ ⑦ ⑧ ⑨ | ■ |
| PSG 050     | SIC 80        | 51                | 30.000         | GTG 038 and GTG 050 | A3378050080    | ① ② ③ ④ ⑤ ⑥ ⑦ ⑧ ⑨ | ■ |
| PSG 050     | SIC 120       | 51                | 30.000         | GTG 038 and GTG 050 | A3378050120    | ① ② ③ ④ ⑤ ⑥ ⑦ ⑧ ⑨ | ■ |
| PSG 075     | SIC 36        | 76                | 20.000         | GTG 075             | A3378075036    | ① ② ③ ④ ⑤ ⑥ ⑦ ⑧ ⑨ | ■ |
| PSG 075     | SIC 60        | 76                | 20.000         | GTG 075             | A3378075060    | ① ② ③ ④ ⑤ ⑥ ⑦ ⑧ ⑨ | ■ |
| PSG 075     | SIC 80        | 76                | 20.000         | GTG 075             | A3378075080    | ① ② ③ ④ ⑤ ⑥ ⑦ ⑧ ⑨ | ■ |

# Material classification

## 1 STEELS AND CAST STEELS Rm up to 800 N/mm<sup>2</sup>

- common structural steels
- free cutting steels
- case hardened steels
- fine grained structural steels
- extruded steels
- toughened structural steels
- boiler plate
- nitrided steels
- cast steels
- heat treated steels
- heat resistant structural steels

## 2 ALLOYED, TEMPERED STEELS Rm 800 up to 1200 N/mm<sup>2</sup>

- case hardened steels
- spring steels
- fine grained structural steels
- nitrided steels
- heat treated steels
- wear resistant steels
- bearing steels

## 3 TOOL STEELS Rm up to 1300 N/mm<sup>2</sup>

- 60 - 65 HRC
- high-speed steels
- non-alloyed tool steels
- cold working tool steels
- hot working tool steels

## 4 RUST, ACID AND HEAT RESISTANT STEELS AND CAST STEELS

- austenitic
- ferritic
- ferritic-austenitic
- heat-resistant
- martensitic
- stainless, sulphurized

## 5 CAST IRON

## 6 ALUMINIUM, MAGNESIUM AND COPPER ALLOYS

- over 300 HB
- 200-300 HB
- up to 200 HB
- over 15% Si
- 10-15% Si
- 0,5-10% Si
- below 0,5% Si

## 7 TITANIUM AND NICKEL ALLOYS

- Rm 900 up to 1500 N/mm<sup>2</sup>
- Rm up to 900 N/mm<sup>2</sup>

## 8 PLASTICS, WOOD, RUBBER

## 9 GLASS / CARBIDES

## 10 STONE / TILES / GAS CEMENT

## 11 CONCRETE / REINFORCED CONCRETE

## 12 CERAMIC / FLOOR TILES

## 13 MARBLE

## 14 GRANITE

## 15 FRESHLY POURED CONCRETE

## 16 ASPHALT

● best suitable

○ suitable

■ delivery ex-stock

▲ delivery on request

Ⓢ regrind service, please enquire

# Safety Symbols

(Depending on the product these symbols may vary)



Wear eye protection



Wear hearing protection



Wear a respirator



Read the instructions



Wear gloves



Only permitted with a back-up pad



Not permitted for wet grinding



Not permitted for face grinding



Do not use if damaged



Do not use for freehand cutting