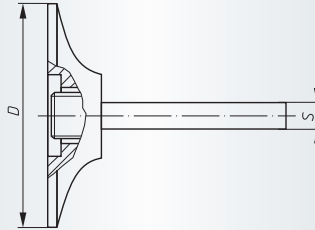
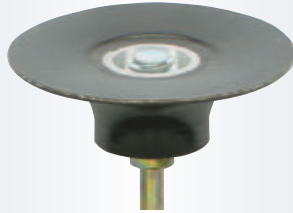


GTG, Mandrels for quick-change abrasive discs
Ordering example: A33500200026

Packing unit:

1 pc. per type

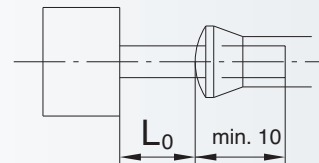
n max.: please also refer to Abrasive discs, PSG, page 326–330

| Description | D mm | S mm | Type | n max. (1/min) | Product-Number | | | | | | | | | | | | | |
|-------------|------|------|--------|----------------|----------------|--|--|--|--|--|--|--|--|--|--|--|--|---|
| GTG 020.06 | 18 | 6 | medium | 40.000 | A33500200026 | | | | | | | | | | | | | ■ |
| GTG 025.06 | 23 | 6 | medium | 40.000 | A33500250026 | | | | | | | | | | | | | ■ |
| GTG 038.06 | 33 | 6 | medium | 25.000 | A33500380026 | | | | | | | | | | | | | ■ |
| GTG 050.06 | 45 | 6 | medium | 25.000 | A33500500026 | | | | | | | | | | | | | ■ |
| GTG 050.06 | 45 | 6 | hard | 30.000 | A33500500036 | | | | | | | | | | | | | ■ |
| GTG 075.06 | 70 | 6 | medium | 20.000 | A33500750026 | | | | | | | | | | | | | ■ |
| GTG 075.06 | 70 | 6 | hard | 20.000 | A33500750036 | | | | | | | | | | | | | ■ |

The mandrels are supplied in a **medium** hardness for universal application. For severe applications (when using Z POWER and CERAMIC) please use **hard** quality mandrels.

The stated maximum operating speed is calculated using the maximum mandrel diameter and maximum overhang L_0 of 5 mm.

For other overhangs and smaller mandrel diameters, the maximum operating speed must be re-calculated.



Material classification

1 STEELS AND CAST STEELS

Rm up to 800 N/mm²

- common structural steels
- free cutting steels
- case hardened steels
- fine grained structural steels
- extruded steels
- toughened structural steels
- boiler plate
- nitrided steels
- cast steels
- heat treated steels
- heat resistant structural steels

2 ALLOYED, TEMPERED STEELS

Rm 800 up to 1200 N/mm²

- case hardened steels
- spring steels
- fine grained structural steels
- nitrided steels
- heat treated steels
- wear resistant steels
- bearing steels

3 TOOL STEELS Rm up to 1300 N/mm²

- 60 - 65 HRC
- high-speed steels
- non-alloyed tool steels
- cold working tool steels
- hot working tool steels

4 RUST, ACID AND HEAT RESISTANT STEELS AND CAST STEELS

- austenitic
- ferritic
- ferritic-austenitic
- heat-resistant
- martensitic
- stainless, sulphurized

5 CAST IRON

6 ALUMINIUM, MAGNESIUM AND COPPER ALLOYS

- over 300 HB
- 200-300 HB
- up to 200 HB
- over 15% Si
- 10-15% Si
- 0,5-10% Si
- below 0,5% Si

7 TITANIUM AND NICKEL ALLOYS

- Rm 900 up to 1500 N/mm²
- Rm up to 900 N/mm²

8 PLASTICS, WOOD, RUBBER

9 GLASS / CARBIDES

10 STONE / TILES / GAS CEMENT

11 CONCRETE / REINFORCED CONCRETE

12 CERAMIC / FLOOR TILES

13 MARBLE

14 GRANITE

15 FRESHLY POURED CONCRETE

16 ASPHALT

● best suitable

○ suitable

■ delivery ex-stock

▲ delivery on request

Ⓢ regrind service, please enquire

Safety Symbols

(Depending on the product these symbols may vary)



Wear eye protection



Wear hearing protection



Wear a respirator



Read the instructions



Wear gloves



Only permitted with a back-up pad



Not permitted for wet grinding



Not permitted for face grinding



Do not use if damaged



Do not use for freehand cutting