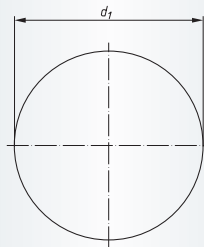


PSR, Abrasive discs with plastic thread, quick-change heavy duty fleece
Ordering example: A3375038005


Packing unit:
 50 pcs. per type
 from Ø 75 mm: 25 pcs. per type

Description	Quality Grits	d ₁ mm	n max. (1/min)	Suitable carriers	Product-Number	recommended for	
PSR 038	Fleece fine	38	10.000	GTR 038	A3375038005	① ② ③ ④ ⑤ ⑥ ⑦ ⑧	■
PSR 038	Fleece medium	38	10.000	GTR 038	A3375038002	① ② ③ ④ ⑤ ⑥ ⑦ ⑧	■
PSR 050	Fleece coarse	51	8.000	GTR 038 and GTR 050	A3375050004	① ② ③ ④ ⑤ ⑥ ⑦ ⑧	■
PSR 050	Fleece fine	51	8.000	GTR 038 and GTR 050	A3375050005	① ② ③ ④ ⑤ ⑥ ⑦ ⑧	■
PSR 050	Fleece medium	51	8.000	GTR 038 and GTR 050	A3375050002	① ② ③ ④ ⑤ ⑥ ⑦ ⑧	■
PSR 075	Fleece coarse	76	5.500	GTR 038, GTR 050 and GTR 075	A3375075004	① ② ③ ④ ⑤ ⑥ ⑦ ⑧	■
PSR 075	Fleece fine	76	5.500	GTR 038, GTR 050 and GTR 075	A3375075005	① ② ③ ④ ⑤ ⑥ ⑦ ⑧	■
PSR 075	Fleece medium	76	5.500	GTR 038, GTR 050 and GTR 075	A3375075002	① ② ③ ④ ⑤ ⑥ ⑦ ⑧	■

Material classification

1 STEELS AND CAST STEELS

Rm up to 800 N/mm²

- common structural steels
- free cutting steels
- case hardened steels
- fine grained structural steels
- extruded steels
- toughened structural steels
- boiler plate
- nitrided steels
- cast steels
- heat treated steels
- heat resistant structural steels

2 ALLOYED, TEMPERED STEELS

Rm 800 up to 1200 N/mm²

- case hardened steels
- spring steels
- fine grained structural steels
- nitrided steels
- heat treated steels
- wear resistant steels
- bearing steels

3 TOOL STEELS Rm up to 1300 N/mm²

- 60 - 65 HRC
- high-speed steels
- non-alloyed tool steels
- cold working tool steels
- hot working tool steels

4 RUST, ACID AND HEAT RESISTANT STEELS AND CAST STEELS

- austenitic
- ferritic
- ferritic-austenitic
- heat-resistant
- martensitic
- stainless, sulphurized

5 CAST IRON

6 ALUMINIUM, MAGNESIUM AND COPPER ALLOYS

- over 300 HB
- 200-300 HB
- up to 200 HB
- over 15% Si
- 10-15% Si
- 0,5-10% Si
- below 0,5% Si

7 TITANIUM AND NICKEL ALLOYS

- Rm 900 up to 1500 N/mm²
- Rm up to 900 N/mm²

8 PLASTICS, WOOD, RUBBER

9 GLASS / CARBIDES

10 STONE / TILES / GAS CEMENT

11 CONCRETE / REINFORCED CONCRETE

12 CERAMIC / FLOOR TILES

13 MARBLE

14 GRANITE

15 FRESHLY POURED CONCRETE

16 ASPHALT

● best suitable

○ suitable

■ delivery ex-stock

▲ delivery on request

Ⓢ regrind service, please enquire

Safety Symbols

(Depending on the product these symbols may vary)



Wear eye protection



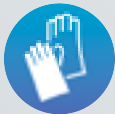
Wear hearing protection



Wear a respirator



Read the instructions



Wear gloves



Only permitted with a back-up pad



Not permitted for wet grinding



Not permitted for face grinding



Do not use if damaged



Do not use for freehand cutting