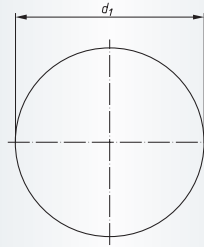
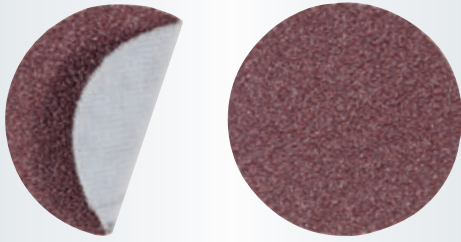


PSH, Abrasive discs, self-fixing
Ordering example: A3300018060

Packing unit:

100 pcs. per type

n max.: please refer to the mandrels self-fixing GTH, page 338

NK = reg. Aluminium Oxide

Description	Grits	d ₁ mm	Product-Number	recommended for	
PSH 018	NK 60	20	A3300018060	1 2 3 4 5 6 7 8	■
PSH 018	NK 80	20	A3300018080	1 2 3 4 5 6 7 8	■
PSH 018	NK 120	20	A3300018120	1 2 3 4 5 6 7 8	■
PSH 018	NK 150	20	A3300018150	1 2 3 4 5 6 7 8	■
PSH 018	NK 180	20	A3300018180	1 2 3 4 5 6 7 8	■
PSH 018	NK 240	20	A3300018240	1 2 3 4 5 6 7 8	■
PSH 018	NK 320	20	A3300018320	1 2 3 4 5 6 7 8	■
PSH 030	NK 60	33	A3300030060	1 2 3 4 5 6 7 8	■
PSH 030	NK 80	33	A3300030080	1 2 3 4 5 6 7 8	■
PSH 030	NK 120	33	A3300030120	1 2 3 4 5 6 7 8	■
PSH 030	NK 150	33	A3300030150	1 2 3 4 5 6 7 8	■
PSH 030	NK 180	33	A3300030180	1 2 3 4 5 6 7 8	■
PSH 030	NK 240	33	A3300030240	1 2 3 4 5 6 7 8	■
PSH 030	NK 320	33	A3300030320	1 2 3 4 5 6 7 8	■
PSH 045	NK 60	48	A3300045060	1 2 3 4 5 6 7 8	■
PSH 045	NK 80	48	A3300045080	1 2 3 4 5 6 7 8	■
PSH 045	NK 120	48	A3300045120	1 2 3 4 5 6 7 8	■
PSH 045	NK 150	48	A3300045150	1 2 3 4 5 6 7 8	■
PSH 045	NK 180	48	A3300045180	1 2 3 4 5 6 7 8	■
PSH 045	NK 240	48	A3300045240	1 2 3 4 5 6 7 8	■
PSH 060	NK 60	63	A3300060060	1 2 3 4 5 6 7 8	■
PSH 060	NK 80	63	A3300060080	1 2 3 4 5 6 7 8	■
PSH 060	NK 120	63	A3300060120	1 2 3 4 5 6 7 8	■
PSH 060	NK 150	63	A3300060150	1 2 3 4 5 6 7 8	■
PSH 060	NK 180	63	A3300060180	1 2 3 4 5 6 7 8	■
PSH 060	NK 240	63	A3300060240	1 2 3 4 5 6 7 8	■
PSH 060	NK 320	63	A3300060320	1 2 3 4 5 6 7 8	■
PSH 075	NK 60	78	A3300075060	1 2 3 4 5 6 7 8	■
PSH 075	NK 80	78	A3300075080	1 2 3 4 5 6 7 8	■
PSH 075	NK 120	78	A3300075120	1 2 3 4 5 6 7 8	■
PSH 075	NK 150	78	A3300075150	1 2 3 4 5 6 7 8	■
PSH 075	NK 180	78	A3300075180	1 2 3 4 5 6 7 8	■
PSH 075	NK 240	78	A3300075240	1 2 3 4 5 6 7 8	■
PSH 075	NK 320	78	A3300075320	1 2 3 4 5 6 7 8	■
PSH 125	NK 60	125	A3300120060	1 2 3 4 5 6 7 8	■
PSH 125	NK 80	125	A3300120080	1 2 3 4 5 6 7 8	■

Material classification

1 STEELS AND CAST STEELS

Rm up to 800 N/mm²

- common structural steels
- free cutting steels
- case hardened steels
- fine grained structural steels
- extruded steels
- toughened structural steels
- boiler plate
- nitrided steels
- cast steels
- heat treated steels
- heat resistant structural steels

2 ALLOYED, TEMPERED STEELS

Rm 800 up to 1200 N/mm²

- case hardened steels
- spring steels
- fine grained structural steels
- nitrided steels
- heat treated steels
- wear resistant steels
- bearing steels

3 TOOL STEELS Rm up to 1300 N/mm²

- 60 - 65 HRC
- high-speed steels
- non-alloyed tool steels
- cold working tool steels
- hot working tool steels

4 RUST, ACID AND HEAT RESISTANT STEELS AND CAST STEELS

- austenitic
- ferritic
- ferritic-austenitic
- heat-resistant
- martensitic
- stainless, sulphurized

5 CAST IRON

6 ALUMINIUM, MAGNESIUM AND COPPER ALLOYS

- over 300 HB
- 200-300 HB
- up to 200 HB
- over 15% Si
- 10-15% Si
- 0,5-10% Si
- below 0,5% Si

7 TITANIUM AND NICKEL ALLOYS

- Rm 900 up to 1500 N/mm²
- Rm up to 900 N/mm²

8 PLASTICS, WOOD, RUBBER

9 GLASS / CARBIDES

10 STONE / TILES / GAS CEMENT

11 CONCRETE / REINFORCED CONCRETE

12 CERAMIC / FLOOR TILES

13 MARBLE

14 GRANITE

15 FRESHLY POURED CONCRETE

16 ASPHALT

● best suitable

○ suitable

■ delivery ex-stock

▲ delivery on request

Ⓢ regrind service, please enquire

Safety Symbols

(Depending on the product these symbols may vary)



Wear eye protection



Wear hearing protection



Wear a respirator



Read the instructions



Wear gloves



Only permitted with a back-up pad



Not permitted for wet grinding



Not permitted for face grinding



Do not use if damaged



Do not use for freehand cutting