

Specification and application P5

The polishing points of this group are characterized by their special structure and bonding i.e. fibre reinforced. This makes them ideally suited for fine finishing of aluminium and associated alloys, non-ferrous metals and low and high alloyed steels.

Due to the fibre reinforcement, these tools have exceptional edge-retention capabilities and resilience. Polishing points in group P5 are available in grit sizes detailed below; they are identified with a red marking.

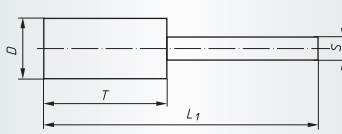
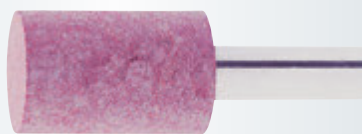
			
Color	black	pale grey	red
Grit	46	80	120



Industry

Shape ZY, Cylindrical (according to DIN 69170)

Ordering example: A2620004083080



Packing unit:

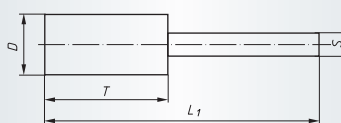
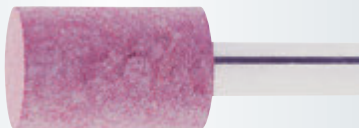
Shank 3 mm = 20 pcs. per type,

Shank 6 mm = 10 pcs. per type

Further dimensions and grit sizes on request

v_{max} : 50 m/s

Description	Grit	D mm	T mm	S mm	L ₁ mm	Product-Number	recommended for	
P5ZY 0408.03	80	4	8	3	38	A2620004083080	1 2 3 4 5 6 7	■
P5ZY 0408.03	120	4	8	3	38	A2620004083120	1 2 3 4 5 6 7	■
P5ZY 0510.03	80	5	10	3	40	A2620005103080	1 2 3 4 5 6 7	■
P5ZY 0510.03	120	5	10	3	40	A2620005103120	1 2 3 4 5 6 7	■
P5ZY 0610.03	80	6	10	3	40	A2620006103080	1 2 3 4 5 6 7	■
P5ZY 0610.03	120	6	10	3	40	A2620006103120	1 2 3 4 5 6 7	■
P5ZY 0810.03	80	8	10	3	40	A2620008103080	1 2 3 4 5 6 7	■
P5ZY 0810.03	120	8	10	3	40	A2620008103120	1 2 3 4 5 6 7	■
P5ZY 0816.06	46	8	16	6	56	A2620008166046	1 2 3 4 5 6 7	■
P5ZY 0816.06	80	8	16	6	56	A2620008166080	1 2 3 4 5 6 7	■
P5ZY 0816.06	120	8	16	6	56	A2620008166120	1 2 3 4 5 6 7	■
P5ZY 1010.03	80	10	10	3	40	A2620010103080	1 2 3 4 5 6 7	■
P5ZY 1010.03	120	10	10	3	40	A2620010103120	1 2 3 4 5 6 7	■
P5ZY 1020.06	46	10	20	6	60	A2620010206046	1 2 3 4 5 6 7	■
P5ZY 1020.06	80	10	20	6	60	A2620010206080	1 2 3 4 5 6 7	■
P5ZY 1020.06	120	10	20	6	60	A2620010206120	1 2 3 4 5 6 7	■
P5ZY 1313.03	120	13	13	3	43	A2620013133120	1 2 3 4 5 6 7	■
P5ZY 1316.03	80	13	16	3	46	A2620013163080	1 2 3 4 5 6 7	■
P5ZY 1320.06	80	13	20	6	60	A2620013206080	1 2 3 4 5 6 7	■

Shape ZY, Cylindrical (according to DIN 69170)
Ordering example: A2620013206080

Packing unit:

Shank 3 mm = 20 pcs. per type,

Shank 6 mm = 10 pcs. per type

Further dimensions and grit sizes on request

 $v_{max.}: 50 \text{ m/s}$

Description	Grit	D mm	T mm	S mm	L ₁ mm	Product-Number	recommended for										
P5ZY 1320.06	120	13	20	6	60	A2620013206120	1	2	3	4	5	6	7				■
P5ZY 1620.06	80	16	20	6	60	A2620016206080	1	2	3	4	5	6	7				■
P5ZY 1620.06	120	16	20	6	60	A2620016206120	1	2	3	4	5	6	7				■
P5ZY 1632.06	46	16	32	6	72	A2620016326046	1	2	3	4	5	6	7				■
P5ZY 1632.06	80	16	32	6	72	A2620016326080	1	2	3	4	5	6	7				■
P5ZY 2020.06	80	20	20	6	60	A2620020206080	1	2	3	4	5	6	7				■
P5ZY 2032.06	46	20	32	6	72	A2620020326046	1	2	3	4	5	6	7				■
P5ZY 2032.06	120	20	32	6	72	A2620020326120	1	2	3	4	5	6	7				■
P5ZY 3232.06	80	32	32	6	72	A2620032326080	1	2	3	4	5	6	7				■
P5ZY 4016.06	120	40	16	6	56	A2620040166120	1	2	3	4	5	6	7				■

Material classification

1 STEELS AND CAST STEELS Rm up to 800 N/mm²

- common structural steels
- free cutting steels
- case hardened steels
- fine grained structural steels
- extruded steels
- toughened structural steels
- boiler plate
- nitrided steels
- cast steels
- heat treated steels
- heat resistant structural steels

2 ALLOYED, TEMPERED STEELS Rm 800 up to 1200 N/mm²

- case hardened steels
- spring steels
- fine grained structural steels
- nitrided steels
- heat treated steels
- wear resistant steels
- bearing steels

3 TOOL STEELS Rm up to 1300 N/mm²

- 60 - 65 HRC
- high-speed steels
- non-alloyed tool steels
- cold working tool steels
- hot working tool steels

4 RUST, ACID AND HEAT RESISTANT STEELS AND CAST STEELS

- austenitic
- ferritic
- ferritic-austenitic
- heat-resistant
- martensitic
- stainless, sulphurized

5 CAST IRON

6 ALUMINIUM, MAGNESIUM AND COPPER ALLOYS

- over 300 HB
- 200-300 HB
- up to 200 HB
- over 15% Si
- 10-15% Si
- 0,5-10% Si
- below 0,5% Si

7 TITANIUM AND NICKEL ALLOYS

- Rm 900 up to 1500 N/mm²
- Rm up to 900 N/mm²

8 PLASTICS, WOOD, RUBBER

9 GLASS / CARBIDES

10 STONE / TILES / GAS CEMENT

11 CONCRETE / REINFORCED CONCRETE

12 CERAMIC / FLOOR TILES

13 MARBLE

14 GRANITE

15 FRESHLY POURED CONCRETE

16 ASPHALT

● best suitable

○ suitable

■ delivery ex-stock

▲ delivery on request

Ⓢ regrind service, please enquire

Safety Symbols

(Depending on the product these symbols may vary)



Wear eye protection



Wear hearing protection



Wear a respirator



Read the instructions



Wear gloves



Only permitted with a back-up pad



Not permitted for wet grinding



Not permitted for face grinding



Do not use if damaged



Do not use for freehand cutting