

Specification and application P2

The polishing mounted points of this group are available in the five grit sizes as detailed below, and are available in a variety of shapes and sizes. They are colour coded to prevent any confusion and to avoid any errors in the polishing process. The soft rubber bonding allows for a very soft grinding effect. Polishing points of this group P2 are mainly used on a pre-machined surface where a fine

polished finish is required. Polishing wheels in this group are also available with a max. diameter 200mm. Exact dimensions and prices are available on request.

					
Color	black	pale grey	red	brown	green
Grit size	46	80	120	220	280



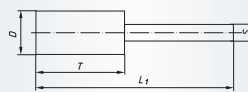
Industry

Shape ZY, Cylindrical (according to DIN 69170)

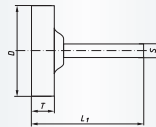
Ordering example: A2610004083080



Type 1



Type 2



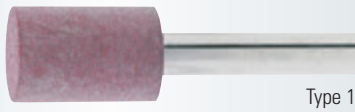
Packing unit:

Shank 3 mm = 20 pcs. per type,
Shank 6 mm = 10 pcs. per type

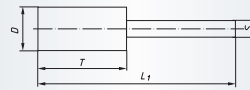
Further dimensions and grit sizes on request

v_{max} : 16 m/s

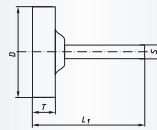
Description	Grit	Type	D mm	T mm	S mm	L ₁ mm	Product-Number	recommended for	
P2ZY 0408.03	80	1	4	8	3	38	A2610004083080	1 2 3 4 5 6 7 8	■
P2ZY 0408.03	120	1	4	8	3	38	A2610004083120	1 2 3 4 5 6 7 8	■
P2ZY 0408.03	220	1	4	8	3	38	A2610004083220	1 2 3 4 5 6 7 8	■
P2ZY 0408.03	280	1	4	8	3	38	A2610004083280	1 2 3 4 5 6 7 8	■
P2ZY 0510.03	80	1	5	10	3	40	A2610005103080	1 2 3 4 5 6 7 8	■
P2ZY 0510.03	120	1	5	10	3	40	A2610005103120	1 2 3 4 5 6 7 8	■
P2ZY 0510.03	220	1	5	10	3	40	A2610005103220	1 2 3 4 5 6 7 8	■
P2ZY 0510.03	280	1	5	10	3	40	A2610005103280	1 2 3 4 5 6 7 8	■
P2ZY 0610.03	80	1	6	10	3	40	A2610006103080	1 2 3 4 5 6 7 8	■
P2ZY 0610.03	120	1	6	10	3	40	A2610006103120	1 2 3 4 5 6 7 8	■
P2ZY 0610.03	220	1	6	10	3	40	A2610006103220	1 2 3 4 5 6 7 8	■
P2ZY 0610.03	280	1	6	10	3	40	A2610006103280	1 2 3 4 5 6 7 8	■
P2ZY 0810.03	46	1	8	10	3	40	A2610008103046	1 2 3 4 5 6 7 8	■

Shape ZY, Cylindrical (according to DIN 69170)
Ordering example: A2610008103080


Type 1



Type 2


Packing unit:

 Shank 3 mm = 20 pcs. per type,
 Shank 6 mm = 10 pcs. per type

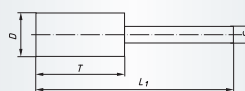
Further dimensions and grit sizes on request

 $v_{max}: 16 \text{ m/s}$

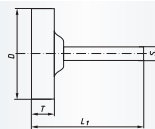
Description	Grit	Type	D mm	T mm	S mm	L ₁ mm	Product-Number	recommended for								
P2ZY 0810.03	80	1	8	10	3	40	A2610008103080	1	2	3	4	5	6	7	8	■
P2ZY 0810.03	120	1	8	10	3	40	A2610008103120	1	2	3	4	5	6	7	8	■
P2ZY 0810.03	220	1	8	10	3	40	A2610008103220	1	2	3	4	5	6	7	8	■
P2ZY 0810.03	280	1	8	10	3	40	A2610008103280	1	2	3	4	5	6	7	8	■
P2ZY 0816.06	80	1	8	16	6	56	A2610008166080	1	2	3	4	5	6	7	8	■
P2ZY 0816.06	120	1	8	16	6	56	A2610008166120	1	2	3	4	5	6	7	8	■
P2ZY 0816.06	220	1	8	16	6	56	A2610008166220	1	2	3	4	5	6	7	8	■
P2ZY 0816.06	280	1	8	16	6	56	A2610008166280	1	2	3	4	5	6	7	8	■
P2ZY 1010.03	46	1	10	10	3	40	A2610010103046	1	2	3	4	5	6	7	8	■
P2ZY 1010.03	80	1	10	10	3	40	A2610010103080	1	2	3	4	5	6	7	8	■
P2ZY 1010.03	120	1	10	10	3	40	A2610010103120	1	2	3	4	5	6	7	8	■
P2ZY 1010.03	220	1	10	10	3	40	A2610010103220	1	2	3	4	5	6	7	8	■
P2ZY 1010.03	280	1	10	10	3	40	A2610010103280	1	2	3	4	5	6	7	8	■
P2ZY 1020.06	80	1	10	20	6	60	A2610010206080	1	2	3	4	5	6	7	8	■
P2ZY 1020.06	120	1	10	20	6	60	A2610010206120	1	2	3	4	5	6	7	8	■
P2ZY 1020.06	220	1	10	20	6	60	A2610010206220	1	2	3	4	5	6	7	8	■
P2ZY 1020.06	280	1	10	20	6	60	A2610010206280	1	2	3	4	5	6	7	8	■
P2ZY 1313.03	80	1	13	13	3	43	A2610013133080	1	2	3	4	5	6	7	8	■
P2ZY 1313.03	120	1	13	13	3	43	A2610013133120	1	2	3	4	5	6	7	8	■
P2ZY 1313.03	220	1	13	13	3	43	A2610013133220	1	2	3	4	5	6	7	8	■
P2ZY 1313.03	280	1	13	13	3	43	A2610013133280	1	2	3	4	5	6	7	8	■
P2ZY 1316.03	120	1	13	16	3	46	A2610013163120	1	2	3	4	5	6	7	8	■
P2ZY 1320.06	46	1	13	20	6	60	A2610013206046	1	2	3	4	5	6	7	8	■
P2ZY 1320.06	80	1	13	20	6	60	A2610013206080	1	2	3	4	5	6	7	8	■
P2ZY 1320.06	120	1	13	20	6	60	A2610013206120	1	2	3	4	5	6	7	8	■
P2ZY 1320.06	220	1	13	20	6	60	A2610013206220	1	2	3	4	5	6	7	8	■
P2ZY 1320.06	280	1	13	20	6	60	A2610013206280	1	2	3	4	5	6	7	8	■
P2ZY 1616.03	120	1	16	16	3	46	A2610016163120	1	2	3	4	5	6	7	8	■
P2ZY 1620.06	80	1	16	20	6	60	A2610016206080	1	2	3	4	5	6	7	8	■
P2ZY 1620.06	120	1	16	20	6	60	A2610016206120	1	2	3	4	5	6	7	8	■
P2ZY 1620.06	220	1	16	20	6	60	A2610016206220	1	2	3	4	5	6	7	8	■
P2ZY 1620.06	280	1	16	20	6	60	A2610016206280	1	2	3	4	5	6	7	8	■
P2ZY 1632.06	80	1	16	32	6	72	A2610016326080	1	2	3	4	5	6	7	8	■
P2ZY 1632.06	120	1	16	32	6	72	A2610016326120	1	2	3	4	5	6	7	8	■
P2ZY 1632.06	220	1	16	32	6	72	A2610016326220	1	2	3	4	5	6	7	8	■
P2ZY 2020.06	46	1	20	20	6	60	A2610020206046	1	2	3	4	5	6	7	8	■
P2ZY 2020.06	80	1	20	20	6	60	A2610020206080	1	2	3	4	5	6	7	8	■
P2ZY 2020.06	120	1	20	20	6	60	A2610020206120	1	2	3	4	5	6	7	8	■
P2ZY 2020.06	220	1	20	20	6	60	A2610020206220	1	2	3	4	5	6	7	8	■

Shape ZY, Cylindrical (according to DIN 69170)
Ordering example: A2610020206280


Type 1



Type 2


Packing unit:

Shank 3 mm = 20 pcs. per type,

Shank 6 mm = 10 pcs. per type

Further dimensions and grit sizes on request

 $v_{max}: 16 \text{ m/s}$

Description	Grit	Type	D mm	T mm	S mm	L ₁ mm	Product-Number	recommended for								
P2ZY 2020.06	280	1	20	20	6	60	A2610020206280	1	2	3	4	5	6	7	8	■
P2ZY 2032.06	80	1	20	32	6	72	A2610020326080	1	2	3	4	5	6	7	8	■
P2ZY 2032.06	120	1	20	32	6	72	A2610020326120	1	2	3	4	5	6	7	8	■
P2ZY 2032.06	220	1	20	32	6	72	A2610020326220	1	2	3	4	5	6	7	8	■
P2ZY 2032.06	280	1	20	32	6	72	A2610020326280	1	2	3	4	5	6	7	8	■
P2ZY 2510.06	120	2	25	10	6	50	A2617025106120	1	2	3	4	5	6	7	8	■
P2ZY 3210.06	120	2	32	10	6	50	A2617032106120	1	2	3	4	5	6	7	8	■
P2ZY 3210.06	220	2	32	10	6	50	A2617032106220	1	2	3	4	5	6	7	8	■
P2ZY 3220.06	120	1	32	20	6	60	A2610032206120	1	2	3	4	5	6	7	8	■
P2ZY 3232.06	120	1	32	32	6	72	A2610032326120	1	2	3	4	5	6	7	8	■
P2ZY 3232.06	280	1	32	32	6	72	A2610032326280	1	2	3	4	5	6	7	8	■
P2ZY 4010.06	120	2	40	10	6	50	A2617040106120	1	2	3	4	5	6	7	8	■
P2ZY 4020.06	46	1	40	20	6	60	A2610040206046	1	2	3	4	5	6	7	8	■
P2ZY 4020.06	120	1	40	20	6	60	A2610040206120	1	2	3	4	5	6	7	8	■

Material classification

1 STEELS AND CAST STEELS

Rm up to 800 N/mm²

- common structural steels
- free cutting steels
- case hardened steels
- fine grained structural steels
- extruded steels
- toughened structural steels
- boiler plate
- nitrided steels
- cast steels
- heat treated steels
- heat resistant structural steels

2 ALLOYED, TEMPERED STEELS

Rm 800 up to 1200 N/mm²

- case hardened steels
- spring steels
- fine grained structural steels
- nitrided steels
- heat treated steels
- wear resistant steels
- bearing steels

3 TOOL STEELS Rm up to 1300 N/mm²

- 60 - 65 HRC
- high-speed steels
- non-alloyed tool steels
- cold working tool steels
- hot working tool steels

4 RUST, ACID AND HEAT RESISTANT STEELS AND CAST STEELS

- austenitic
- ferritic
- ferritic-austenitic
- heat-resistant
- martensitic
- stainless, sulphurized

5 CAST IRON

6 ALUMINIUM, MAGNESIUM AND COPPER ALLOYS

- over 300 HB
- 200-300 HB
- up to 200 HB
- over 15% Si
- 10-15% Si
- 0,5-10% Si
- below 0,5% Si

7 TITANIUM AND NICKEL ALLOYS

- Rm 900 up to 1500 N/mm²
- Rm up to 900 N/mm²

8 PLASTICS, WOOD, RUBBER

9 GLASS / CARBIDES

10 STONE / TILES / GAS CEMENT

11 CONCRETE / REINFORCED CONCRETE

12 CERAMIC / FLOOR TILES

13 MARBLE

14 GRANITE

15 FRESHLY POURED CONCRETE

16 ASPHALT

● best suitable

○ suitable

■ delivery ex-stock

▲ delivery on request

Ⓢ regrind service, please enquire

Safety Symbols

(Depending on the product these symbols may vary)



Wear eye protection



Wear hearing protection



Wear a respirator



Read the instructions



Wear gloves



Only permitted with a back-up pad



Not permitted for wet grinding



Not permitted for face grinding



Do not use if damaged



Do not use for freehand cutting