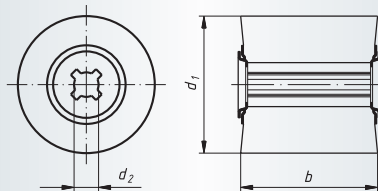


LWF, Sinus-Abrasive rolls of abrasive fleece for conditioning machines
Ordering example: A2281100500104

Packing unit:

LWF 100050 = 2 pcs. per type

LWF 100100 = 1 pc. per type

A = reg. Aluminium Oxide

C = Silicon carbide

Machines to suit: page 292

Description	Grits	d ₁ mm	b mm	d ₂ mm	n recom. (1/min)	n max. (1/min)	Product-Number	recommended for	
LWF 100050	A 104	100	50	19	2.800	3.800	A2281100500104	① ② ③ ④ ⑤ ⑥ ⑦ ⑧	■
LWF 100050	A 106	100	50	19	2.800	3.800	A2281100500106	① ② ③ ④ ⑤ ⑥ ⑦ ⑧	■
LWF 100050	C 208	100	50	19	2.800	3.800	A2281100500208	① ② ③ ④ ⑤ ⑥ ⑦ ⑧ ⑨	■
LWF 100100	A 104	100	100	19	2.800	3.800	A22811001000104	① ② ③ ④ ⑤ ⑥ ⑦ ⑧	■
LWF 100100	A 106	100	100	19	2.800	3.800	A22811001000106	① ② ③ ④ ⑤ ⑥ ⑦ ⑧	■
LWF 100100	C 208	100	100	19	2.800	3.800	A22811001000208	① ② ③ ④ ⑤ ⑥ ⑦ ⑧ ⑨	■

Material classification

1 STEELS AND CAST STEELS

Rm up to 800 N/mm²

- common structural steels
- free cutting steels
- case hardened steels
- fine grained structural steels
- extruded steels
- toughened structural steels
- boiler plate
- nitrided steels
- cast steels
- heat treated steels
- heat resistant structural steels

2 ALLOYED, TEMPERED STEELS

Rm 800 up to 1200 N/mm²

- case hardened steels
- spring steels
- fine grained structural steels
- nitrided steels
- heat treated steels
- wear resistant steels
- bearing steels

3 TOOL STEELS Rm up to 1300 N/mm²

- 60 - 65 HRC
- high-speed steels
- non-alloyed tool steels
- cold working tool steels
- hot working tool steels

4 RUST, ACID AND HEAT RESISTANT STEELS AND CAST STEELS

- austenitic
- ferritic
- ferritic-austenitic
- heat-resistant
- martensitic
- stainless, sulphurized

5 CAST IRON

6 ALUMINIUM, MAGNESIUM AND COPPER ALLOYS

- over 300 HB
- 200-300 HB
- up to 200 HB
- over 15% Si
- 10-15% Si
- 0,5-10% Si
- below 0,5% Si

7 TITANIUM AND NICKEL ALLOYS

- Rm 900 up to 1500 N/mm²
- Rm up to 900 N/mm²

8 PLASTICS, WOOD, RUBBER

9 GLASS / CARBIDES

10 STONE / TILES / GAS CEMENT

11 CONCRETE / REINFORCED CONCRETE

12 CERAMIC / FLOOR TILES

13 MARBLE

14 GRANITE

15 FRESHLY POURED CONCRETE

16 ASPHALT

● best suitable

○ suitable

■ delivery ex-stock

▲ delivery on request

Ⓢ regrind service, please enquire

Safety Symbols

(Depending on the product these symbols may vary)



Wear eye protection



Wear hearing protection



Wear a respirator



Read the instructions



Wear gloves



Only permitted with a back-up pad



Not permitted for wet grinding



Not permitted for face grinding



Do not use if damaged



Do not use for freehand cutting