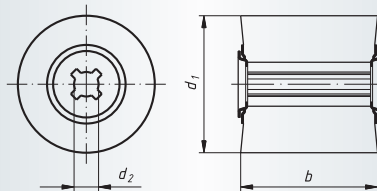


LWM, Flap rolls of abrasive fleece/abrasive cloth combination
Ordering example: A2288100500104

Packing unit:

LWM 100050 = 2 pcs. per type

LWM 100100 = 1 pc. per type

A = reg. Aluminium Oxide

Machines to suit: page 292

Description	Grits	d ₁ mm	b mm	d ₂ mm	n recom. (1/min)	n max. (1/min)	Product-Number	recommended for									
LWM 100050	A 104/80	100	50	19	2.800	6.000	A2288100500104	1	2	3	4	5	6	7	8		■
LWM 100050	A 106/150	100	50	19	2.800	6.000	A2288100500106	1	2	3	4	5	6	7	8		■
LWM 100050	A 107/240	100	50	19	2.800	6.000	A2288100500107	1	2	3	4	5	6	7	8		■
LWM 100100	A 104/80	100	100	19	2.800	6.000	A22881001000104	1	2	3	4	5	6	7	8		■
LWM 100100	A 106/150	100	100	19	2.800	6.000	A22881001000106	1	2	3	4	5	6	7	8		■
LWM 100100	A 107/240	100	100	19	2.800	6.000	A22881001000107	1	2	3	4	5	6	7	8		■

Material classification

1 STEELS AND CAST STEELS Rm up to 800 N/mm²

- common structural steels
- free cutting steels
- case hardened steels
- fine grained structural steels
- extruded steels
- toughened structural steels
- boiler plate
- nitrided steels
- cast steels
- heat treated steels
- heat resistant structural steels

2 ALLOYED, TEMPERED STEELS Rm 800 up to 1200 N/mm²

- case hardened steels
- spring steels
- fine grained structural steels
- nitrided steels
- heat treated steels
- wear resistant steels
- bearing steels

3 TOOL STEELS Rm up to 1300 N/mm²

- 60 - 65 HRC
- high-speed steels
- non-alloyed tool steels
- cold working tool steels
- hot working tool steels

4 RUST, ACID AND HEAT RESISTANT STEELS AND CAST STEELS

- austenitic
- ferritic
- ferritic-austenitic
- heat-resistant
- martensitic
- stainless, sulphurized

5 CAST IRON

6 ALUMINIUM, MAGNESIUM AND COPPER ALLOYS

- over 300 HB
- 200-300 HB
- up to 200 HB
- over 15% Si
- 10-15% Si
- 0,5-10% Si
- below 0,5% Si

7 TITANIUM AND NICKEL ALLOYS

- Rm 900 up to 1500 N/mm²
- Rm up to 900 N/mm²

8 PLASTICS, WOOD, RUBBER

9 GLASS / CARBIDES

10 STONE / TILES / GAS CEMENT

11 CONCRETE / REINFORCED CONCRETE

12 CERAMIC / FLOOR TILES

13 MARBLE

14 GRANITE

15 FRESHLY POURED CONCRETE

16 ASPHALT

● best suitable

○ suitable

■ delivery ex-stock

▲ delivery on request

Ⓢ regrind service, please enquire

Safety Symbols

(Depending on the product these symbols may vary)



Wear eye protection



Wear hearing protection



Wear a respirator



Read the instructions



Wear gloves



Only permitted with a back-up pad



Not permitted for wet grinding



Not permitted for face grinding



Do not use if damaged



Do not use for freehand cutting