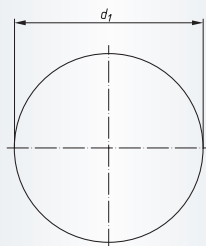
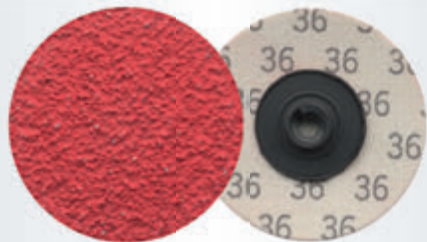


PSG, Abrasive discs, quick-change, Ceramic grain
Ordering example: A3379038036

Packing unit:

100 pcs. per type

from Ø 75 mm: 50 pcs. per type

Description	Quality Grits	d ₁ mm	n max. (1/min)	Suitable carriers	Product-Number	recommended for											
PSG 038	Ceramic 36	38	30.000	GTG 038	A3379038036	2	3	4	5	7							■
PSG 038	Ceramic 60	38	30.000	GTG 038	A3379038060	2	3	4	5	7							■
PSG 038	Ceramic 80	38	30.000	GTG 038	A3379038080	2	3	4	5	7							■
PSG 038	Ceramic 120	38	30.000	GTG 038	A3379038120	2	3	4	5	7							■
PSG 050	Ceramic 36	51	30.000	GTG 038 and GTG 050	A3379050036	2	3	4	5	7							■
PSG 050	Ceramic 60	51	30.000	GTG 038 and GTG 050	A3379050060	2	3	4	5	7							■
PSG 050	Ceramic 80	51	30.000	GTG 038 and GTG 050	A3379050080	2	3	4	5	7							■
PSG 050	Ceramic 120	51	30.000	GTG 038 and GTG 050	A3379050120	2	3	4	5	7							■
PSG 075	Ceramic 36	76	20.000	GTG 075	A3379075036	2	3	4	5	7							■
PSG 075	Ceramic 60	76	20.000	GTG 075	A3379075060	2	3	4	5	7							■
PSG 075	Ceramic 80	76	20.000	GTG 075	A3379075080	2	3	4	5	7							■
PSG 075	Ceramic 120	76	20.000	GTG 075	A3379075120	2	3	4	5	7							■

Material classification

1 STEELS AND CAST STEELS Rm up to 800 N/mm²

- common structural steels
- free cutting steels
- case hardened steels
- fine grained structural steels
- extruded steels
- toughened structural steels
- boiler plate
- nitrided steels
- cast steels
- heat treated steels
- heat resistant structural steels

2 ALLOYED, TEMPERED STEELS Rm 800 up to 1200 N/mm²

- case hardened steels
- spring steels
- fine grained structural steels
- nitrided steels
- heat treated steels
- wear resistant steels
- bearing steels

3 TOOL STEELS Rm up to 1300 N/mm²

- 60 - 65 HRC
- high-speed steels
- non-alloyed tool steels
- cold working tool steels
- hot working tool steels

4 RUST, ACID AND HEAT RESISTANT STEELS AND CAST STEELS

- austenitic
- ferritic
- ferritic-austenitic
- heat-resistant
- martensitic
- stainless, sulphurized

5 CAST IRON

6 ALUMINIUM, MAGNESIUM AND COPPER ALLOYS

- over 300 HB
- 200-300 HB
- up to 200 HB
- over 15% Si
- 10-15% Si
- 0,5-10% Si
- below 0,5% Si

7 TITANIUM AND NICKEL ALLOYS

- Rm 900 up to 1500 N/mm²
- Rm up to 900 N/mm²

8 PLASTICS, WOOD, RUBBER

9 GLASS / CARBIDES

10 STONE / TILES / GAS CEMENT

11 CONCRETE / REINFORCED CONCRETE

12 CERAMIC / FLOOR TILES

13 MARBLE

14 GRANITE

15 FRESHLY POURED CONCRETE

16 ASPHALT

- best suitable
- suitable
- delivery ex-stock
- ▲ delivery on request
- Ⓢ regrind service, please enquire

Safety Symbols

(Depending on the product these symbols may vary)



Wear eye protection



Wear hearing protection



Wear a respirator



Read the instructions



Wear gloves



Only permitted with a back-up pad



Not permitted for wet grinding



Not permitted for face grinding



Do not use if damaged



Do not use for freehand cutting