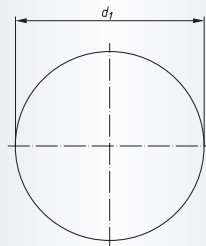
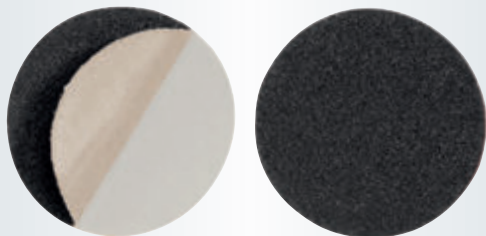


**PSK, Abrasive discs, self-adhesive, Silicon carbide**
*Ordering example: A2305018080*

**Packing unit:**

100 pcs. per type

 n max.: please refer to the mandrels self-adhesive  
 GTK, page 337

SIC = Silicon carbide

Description	Grits	d <sub>1</sub> mm	Product-Number	recommended for	
PSK 018	SIC 80	21	A2305018080	① ② ③ ④ ⑤ ⑥ ⑦ ⑧ ⑨	■
PSK 018	SIC 120	21	A2305018120	① ② ③ ④ ⑤ ⑥ ⑦ ⑧ ⑨	■
PSK 030	SIC 60	33	A2305030060	① ② ③ ④ ⑤ ⑥ ⑦ ⑧ ⑨	■
PSK 030	SIC 80	33	A2305030080	① ② ③ ④ ⑤ ⑥ ⑦ ⑧ ⑨	■
PSK 030	SIC 120	33	A2305030120	① ② ③ ④ ⑤ ⑥ ⑦ ⑧ ⑨	■
PSK 045	SIC 60	48	A2305045060	① ② ③ ④ ⑤ ⑥ ⑦ ⑧ ⑨	■
PSK 045	SIC 80	48	A2305045080	① ② ③ ④ ⑤ ⑥ ⑦ ⑧ ⑨	■
PSK 045	SIC 120	48	A2305045120	① ② ③ ④ ⑤ ⑥ ⑦ ⑧ ⑨	■

# Material classification

## 1 STEELS AND CAST STEELS Rm up to 800 N/mm<sup>2</sup>

- common structural steels
- free cutting steels
- case hardened steels
- fine grained structural steels
- extruded steels
- toughened structural steels
- boiler plate
- nitrided steels
- cast steels
- heat treated steels
- heat resistant structural steels

## 2 ALLOYED, TEMPERED STEELS Rm 800 up to 1200 N/mm<sup>2</sup>

- case hardened steels
- spring steels
- fine grained structural steels
- nitrided steels
- heat treated steels
- wear resistant steels
- bearing steels

## 3 TOOL STEELS Rm up to 1300 N/mm<sup>2</sup>

- 60 - 65 HRC
- high-speed steels
- non-alloyed tool steels
- cold working tool steels
- hot working tool steels

## 4 RUST, ACID AND HEAT RESISTANT STEELS AND CAST STEELS

- austenitic
- ferritic
- ferritic-austenitic
- heat-resistant
- martensitic
- stainless, sulphurized

## 5 CAST IRON

## 6 ALUMINIUM, MAGNESIUM AND COPPER ALLOYS

- over 300 HB
- 200-300 HB
- up to 200 HB
- over 15% Si
- 10-15% Si
- 0,5-10% Si
- below 0,5% Si

## 7 TITANIUM AND NICKEL ALLOYS

- Rm 900 up to 1500 N/mm<sup>2</sup>
- Rm up to 900 N/mm<sup>2</sup>

## 8 PLASTICS, WOOD, RUBBER

## 9 GLASS / CARBIDES

## 10 STONE / TILES / GAS CEMENT

## 11 CONCRETE / REINFORCED CONCRETE

## 12 CERAMIC / FLOOR TILES

## 13 MARBLE

## 14 GRANITE

## 15 FRESHLY POURED CONCRETE

## 16 ASPHALT

● best suitable

○ suitable

■ delivery ex-stock

▲ delivery on request

Ⓢ regrind service, please enquire

# Safety Symbols

(Depending on the product these symbols may vary)



Wear eye protection



Wear hearing protection



Wear a respirator



Read the instructions



Wear gloves



Only permitted with a back-up pad



Not permitted for wet grinding



Not permitted for face grinding



Do not use if damaged



Do not use for freehand cutting